

TITLE	CENTRAL PROCESSOR (KK8-F)	SHEET 2 OF 3	SIZE CODE	NUMBER	REV
			B DD	KK8-F	

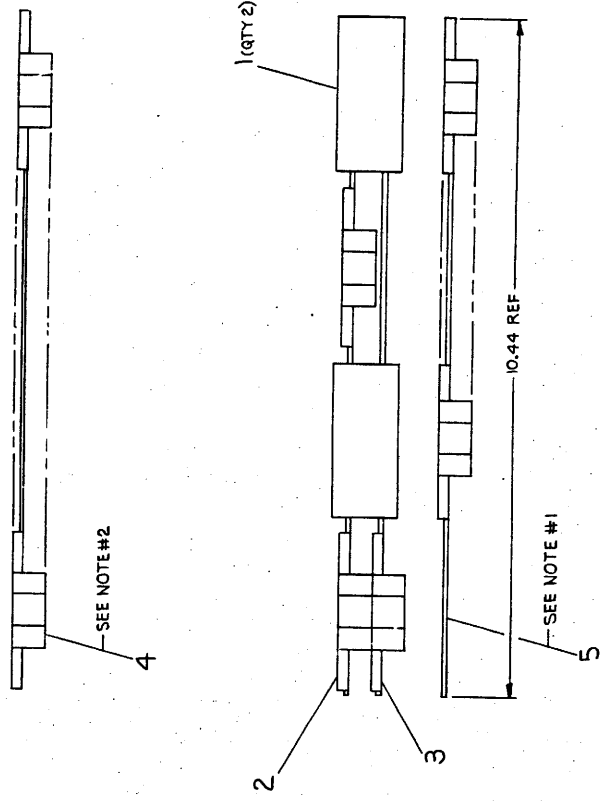


8 7 6 5 4 3 2 1

THIS DRAWING IS THE PROPERTY OF QUALITY CONSTRUCTION COMPANY. IT IS TO BE USED ONLY FOR THE PROJECT AND SITE SPECIFICALLY IDENTIFIED ON THE DRAWING. IT IS NOT TO BE REPRODUCED OR COPIED OR USED IN WHOLE OR IN PART WITHOUT THE WRITTEN PERMISSION OF QUALITY CONSTRUCTION COMPANY.

**NOTES:**

1. ITEM #5 (TIMING GENERATOR) MUST BE PLACED IN THE FIRST SLOT OF THE OMNIBUS AFTER THE CONSOLE BOARD. (ITEM #5 CAN BE REPLACED BY E-CS-M8330-0-1, IF THE ETCH REV IS "F" OR LATER)
2. ITEM #4 (BUS LOADS) MUST BE PLACED IN THE LAST SLOT OF THE LAST OMNIBUS.
3. REFER TO THE PRIORITY LISTING A-SP-PDP8E-0-4



QTY	DESCRIPTION	DWG PART NO	ITEM NO
1	KK8-F SHIPPING LIST	A-PL-KK8-F-2	6
1	TIMING GENERATOR	E-CS-M8330-YB-1	5
1	BUS LOADS	E-CS-M8520-0-1	4
1	MINOR REGISTER CONTROL	E-CS-M8310-0-1	3
1	MAJOR REGISTER	E-CS-M8300-0-1	2
2	EDGE CONNECTOR	B-W-14851-0-0	1

UNLESS OTHERWISE SPECIFIED DIMENSIONS ARE IN INCHES	ITEM NO
FINISH	
CLASS OF NOMINAL DIMENSION RANGE	
ACCURACY	
CHECK ONLY	
MEDIUM	
PREFERRED	
1.000	1.000
0.001	0.001
0.002	0.002
0.004	0.004
0.008	0.008
0.015	0.015
0.030	0.030
0.060	0.060
0.125	0.125
0.250	0.250
0.500	0.500
1.000	1.000
2.000	2.000
5.000	5.000
10.000	10.000
20.000	20.000
50.000	50.000
100.000	100.000
200.000	200.000
500.000	500.000
1000.000	1000.000

QUANTITY & VARIATION	FIRST REVISION
THIRD ANGLE PROJECTION	DATE
REMOVE BURS AND BREAK SHARP CORNERS	BY
DO NOT SCALE DWG	CHK
MATERIAL SEE PARTS LIST	REV
FINISH	

ENGINEER	DATE
PROJ. ENG.	
PROD. DATE	
NEXT REVISION	
DATE	
BY	
CHK	
REV	

SCALE	1/1
SIZE	DD-KK8-F
CODE	UA
NUMBER	KK8-F-0
DIST.	
SHEET	1 OF 1

TITLE	CENTRAL PROCESSOR (KK8-F)
PROJECT	PDP8E
DATE	
BY	
CHK	
REV	

8 7 6 5 4 3 2 1

REV. CHG. NO. CHK. REVISIONS

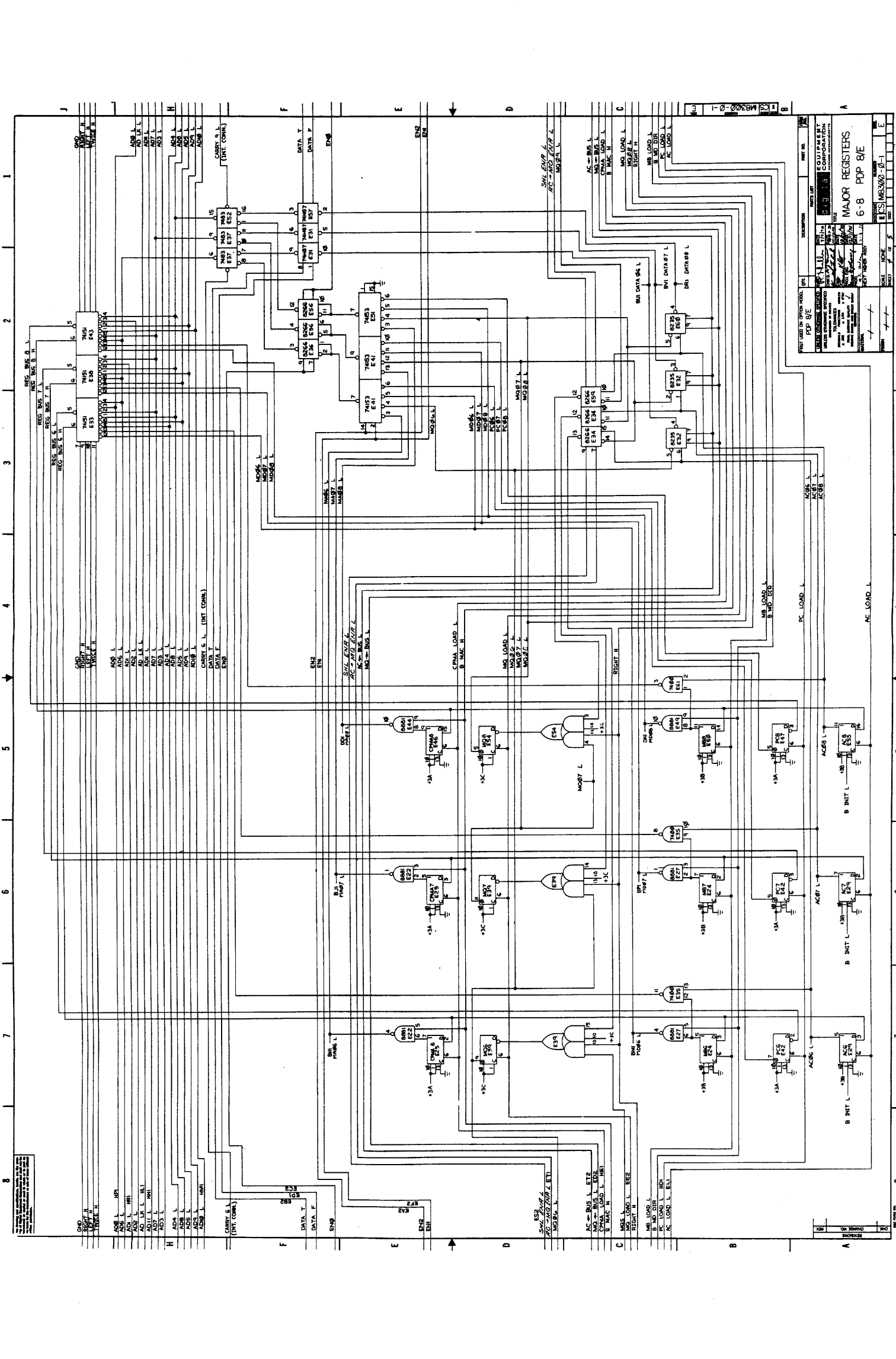












<b>MAJOR REGISTERS</b> PDP 8/E 6-8 PDP 8/E	
<b>DESCRIPTION</b> MAJOR REGISTERS PDP 8/E	<b>PART LIST</b> 74181 74180 7404 7401 7402 7403 7405 7406 7407 7408 7409 7410 7411 7412 7413 7414 7415 7416 7417 7418 7419 7420 7421 7422 7423 7424 7425 7426 7427 7428 7429 7430 7431 7432 7433 7434 7435 7436 7437 7438 7439 7440 7441 7442 7443 7444 7445 7446 7447 7448 7449 7450 7451 7452 7453 7454 7455 7456 7457 7458 7459 7460 7461 7462 7463 7464 7465 7466 7467 7468 7469 7470 7471 7472 7473 7474 7475 7476 7477 7478 7479 7480 7481 7482 7483 7484 7485 7486 7487 7488 7489 7490 7491 7492 7493 7494 7495 7496 7497 7498 7499 7500
<b>REVISIONS</b> 1 2 3 4 5 6 7 8 9 10 11 12 13 14 15 16 17 18 19 20 21 22 23 24 25 26 27 28 29 30	<b>DATE</b> 1 2 3 4 5 6 7 8 9 10 11 12 13 14 15 16 17 18 19 20 21 22 23 24 25 26 27 28 29 30

GND  
 B00  
 B01  
 B02  
 B03  
 B04  
 B05  
 B06  
 B07  
 B08  
 B09  
 B10  
 B11  
 B12  
 B13  
 B14  
 B15  
 B16  
 B17  
 B18  
 B19  
 B20  
 B21  
 B22  
 B23  
 B24  
 B25  
 B26  
 B27  
 B28  
 B29  
 B30  
 B31  
 B32  
 B33  
 B34  
 B35  
 B36  
 B37  
 B38  
 B39  
 B40  
 B41  
 B42  
 B43  
 B44  
 B45  
 B46  
 B47  
 B48  
 B49  
 B50  
 B51  
 B52  
 B53  
 B54  
 B55  
 B56  
 B57  
 B58  
 B59  
 B60  
 B61  
 B62  
 B63  
 B64  
 B65  
 B66  
 B67  
 B68  
 B69  
 B70  
 B71  
 B72  
 B73  
 B74  
 B75  
 B76  
 B77  
 B78  
 B79  
 B80  
 B81  
 B82  
 B83  
 B84  
 B85  
 B86  
 B87  
 B88  
 B89  
 B90  
 B91  
 B92  
 B93  
 B94  
 B95  
 B96  
 B97  
 B98  
 B99  
 B100

AC95 L  
 AC96 L  
 AC97 L  
 AC98 L  
 AC99 L  
 AC100 L  
 AC101 L  
 AC102 L  
 AC103 L  
 AC104 L  
 AC105 L  
 AC106 L  
 AC107 L  
 AC108 L  
 AC109 L  
 AC110 L  
 AC111 L  
 AC112 L  
 AC113 L  
 AC114 L  
 AC115 L  
 AC116 L  
 AC117 L  
 AC118 L  
 AC119 L  
 AC120 L  
 AC121 L  
 AC122 L  
 AC123 L  
 AC124 L  
 AC125 L  
 AC126 L  
 AC127 L  
 AC128 L  
 AC129 L  
 AC130 L  
 AC131 L  
 AC132 L  
 AC133 L  
 AC134 L  
 AC135 L  
 AC136 L  
 AC137 L  
 AC138 L  
 AC139 L  
 AC140 L  
 AC141 L  
 AC142 L  
 AC143 L  
 AC144 L  
 AC145 L  
 AC146 L  
 AC147 L  
 AC148 L  
 AC149 L  
 AC150 L  
 AC151 L  
 AC152 L  
 AC153 L  
 AC154 L  
 AC155 L  
 AC156 L  
 AC157 L  
 AC158 L  
 AC159 L  
 AC160 L  
 AC161 L  
 AC162 L  
 AC163 L  
 AC164 L  
 AC165 L  
 AC166 L  
 AC167 L  
 AC168 L  
 AC169 L  
 AC170 L  
 AC171 L  
 AC172 L  
 AC173 L  
 AC174 L  
 AC175 L  
 AC176 L  
 AC177 L  
 AC178 L  
 AC179 L  
 AC180 L  
 AC181 L  
 AC182 L  
 AC183 L  
 AC184 L  
 AC185 L  
 AC186 L  
 AC187 L  
 AC188 L  
 AC189 L  
 AC190 L  
 AC191 L  
 AC192 L  
 AC193 L  
 AC194 L  
 AC195 L  
 AC196 L  
 AC197 L  
 AC198 L  
 AC199 L  
 AC200 L







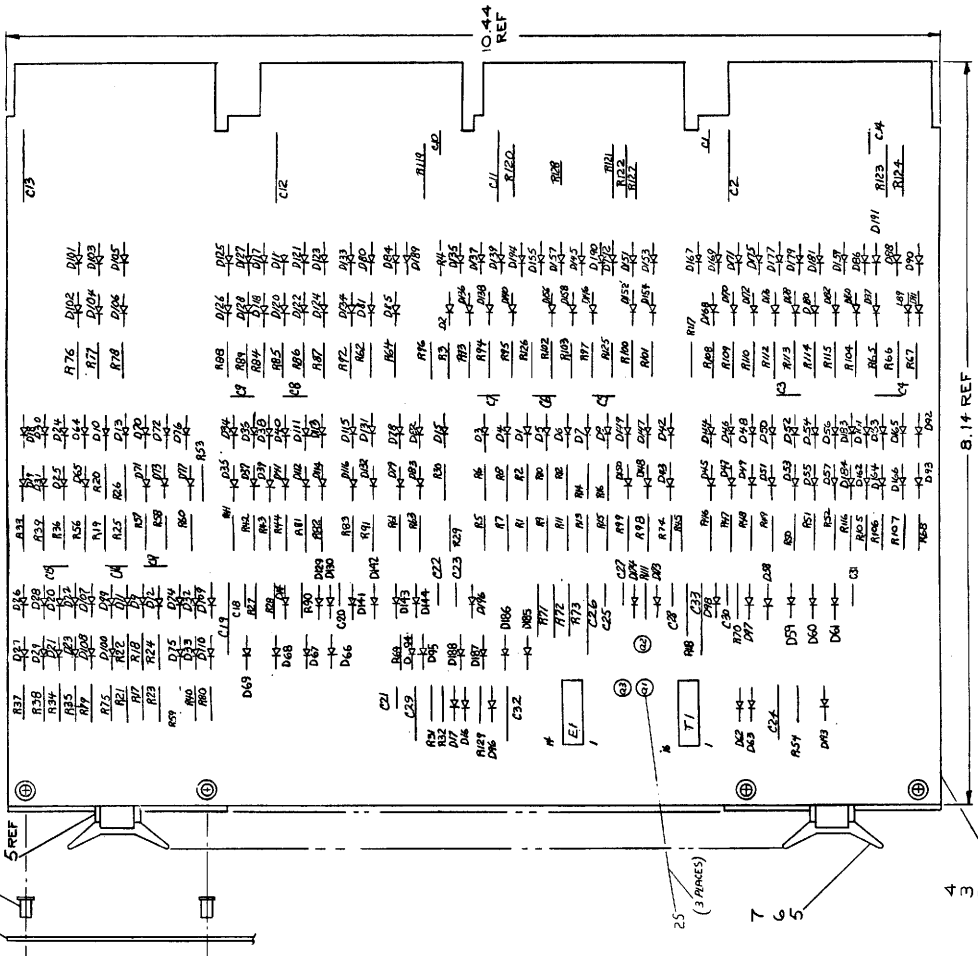






**NOTES:**

- UNLESS OTHERWISE SPECIFIED:  
CAPACITORS = .047UF 16V 15-20%  
RESISTORS = 1000 OHM 5%
- DIODES = D664
- CONNECT ALL WMS C.I.A.K.T (EXCEPT AC1)
- 700E PAGE TO GEORGE
- ITEM NO. B (D664) MAY BE REPLACED WITH D660  
PN. 1103346 (REV. C ONLY).
- INSTALL ITEM 25 (TUBING) ON BASE LEAD OF  
EACH 2W31ES.
- ANY COLOR TUBING MAY BE USED FOR ITEM 25.



QTY	REF	DESCRIPTION	PART NO.
1	R1	TRANSFORMER	1000000000
1	R2	RES 1K 1/4W 5%	1300345
1	R3	RES 1K 1/4W 5%	1300345
1	R4	RES 1K 1/4W 5%	1300345
1	R5	RES 1K 1/4W 5%	1300345
1	R6	RES 1K 1/4W 5%	1300345
1	R7	RES 1K 1/4W 5%	1300345
1	R8	RES 1K 1/4W 5%	1300345
1	R9	RES 1K 1/4W 5%	1300345
1	R10	RES 1K 1/4W 5%	1300345
1	R11	RES 1K 1/4W 5%	1300345
1	R12	RES 1K 1/4W 5%	1300345
1	R13	RES 1K 1/4W 5%	1300345
1	R14	RES 1K 1/4W 5%	1300345
1	R15	RES 1K 1/4W 5%	1300345
1	R16	RES 1K 1/4W 5%	1300345
1	R17	RES 1K 1/4W 5%	1300345
1	R18	RES 1K 1/4W 5%	1300345
1	R19	RES 1K 1/4W 5%	1300345
1	R20	RES 1K 1/4W 5%	1300345
1	R21	RES 1K 1/4W 5%	1300345
1	R22	RES 1K 1/4W 5%	1300345
1	R23	RES 1K 1/4W 5%	1300345
1	R24	RES 1K 1/4W 5%	1300345
1	R25	RES 1K 1/4W 5%	1300345
1	R26	RES 1K 1/4W 5%	1300345
1	R27	RES 1K 1/4W 5%	1300345
1	R28	RES 1K 1/4W 5%	1300345
1	R29	RES 1K 1/4W 5%	1300345
1	R30	RES 1K 1/4W 5%	1300345
1	R31	RES 1K 1/4W 5%	1300345
1	R32	RES 1K 1/4W 5%	1300345
1	R33	RES 1K 1/4W 5%	1300345
1	R34	RES 1K 1/4W 5%	1300345
1	R35	RES 1K 1/4W 5%	1300345
1	R36	RES 1K 1/4W 5%	1300345
1	R37	RES 1K 1/4W 5%	1300345
1	R38	RES 1K 1/4W 5%	1300345
1	R39	RES 1K 1/4W 5%	1300345
1	R40	RES 1K 1/4W 5%	1300345
1	R41	RES 1K 1/4W 5%	1300345
1	R42	RES 1K 1/4W 5%	1300345
1	R43	RES 1K 1/4W 5%	1300345
1	R44	RES 1K 1/4W 5%	1300345
1	R45	RES 1K 1/4W 5%	1300345
1	R46	RES 1K 1/4W 5%	1300345
1	R47	RES 1K 1/4W 5%	1300345
1	R48	RES 1K 1/4W 5%	1300345
1	R49	RES 1K 1/4W 5%	1300345
1	R50	RES 1K 1/4W 5%	1300345
1	R51	RES 1K 1/4W 5%	1300345
1	R52	RES 1K 1/4W 5%	1300345
1	R53	RES 1K 1/4W 5%	1300345
1	R54	RES 1K 1/4W 5%	1300345
1	R55	RES 1K 1/4W 5%	1300345
1	R56	RES 1K 1/4W 5%	1300345
1	R57	RES 1K 1/4W 5%	1300345
1	R58	RES 1K 1/4W 5%	1300345
1	R59	RES 1K 1/4W 5%	1300345
1	R60	RES 1K 1/4W 5%	1300345
1	R61	RES 1K 1/4W 5%	1300345
1	R62	RES 1K 1/4W 5%	1300345
1	R63	RES 1K 1/4W 5%	1300345
1	R64	RES 1K 1/4W 5%	1300345
1	R65	RES 1K 1/4W 5%	1300345
1	R66	RES 1K 1/4W 5%	1300345
1	R67	RES 1K 1/4W 5%	1300345
1	R68	RES 1K 1/4W 5%	1300345
1	R69	RES 1K 1/4W 5%	1300345
1	R70	RES 1K 1/4W 5%	1300345
1	R71	RES 1K 1/4W 5%	1300345
1	R72	RES 1K 1/4W 5%	1300345
1	R73	RES 1K 1/4W 5%	1300345
1	R74	RES 1K 1/4W 5%	1300345
1	R75	RES 1K 1/4W 5%	1300345
1	R76	RES 1K 1/4W 5%	1300345
1	R77	RES 1K 1/4W 5%	1300345
1	R78	RES 1K 1/4W 5%	1300345
1	R79	RES 1K 1/4W 5%	1300345
1	R80	RES 1K 1/4W 5%	1300345
1	R81	RES 1K 1/4W 5%	1300345
1	R82	RES 1K 1/4W 5%	1300345
1	R83	RES 1K 1/4W 5%	1300345
1	R84	RES 1K 1/4W 5%	1300345
1	R85	RES 1K 1/4W 5%	1300345
1	R86	RES 1K 1/4W 5%	1300345
1	R87	RES 1K 1/4W 5%	1300345
1	R88	RES 1K 1/4W 5%	1300345
1	R89	RES 1K 1/4W 5%	1300345
1	R90	RES 1K 1/4W 5%	1300345
1	R91	RES 1K 1/4W 5%	1300345
1	R92	RES 1K 1/4W 5%	1300345
1	R93	RES 1K 1/4W 5%	1300345
1	R94	RES 1K 1/4W 5%	1300345
1	R95	RES 1K 1/4W 5%	1300345
1	R96	RES 1K 1/4W 5%	1300345
1	R97	RES 1K 1/4W 5%	1300345
1	R98	RES 1K 1/4W 5%	1300345
1	R99	RES 1K 1/4W 5%	1300345
1	R100	RES 1K 1/4W 5%	1300345
1	R101	RES 1K 1/4W 5%	1300345
1	R102	RES 1K 1/4W 5%	1300345
1	R103	RES 1K 1/4W 5%	1300345
1	R104	RES 1K 1/4W 5%	1300345
1	R105	RES 1K 1/4W 5%	1300345
1	R106	RES 1K 1/4W 5%	1300345
1	R107	RES 1K 1/4W 5%	1300345
1	C1	CAP 100UF 16V 5%	1000000000
1	C2	CAP 100UF 16V 5%	1000000000
1	C3	CAP 100UF 16V 5%	1000000000
1	C4	CAP 100UF 16V 5%	1000000000
1	C5	CAP 100UF 16V 5%	1000000000
1	C6	CAP 100UF 16V 5%	1000000000
1	C7	CAP 100UF 16V 5%	1000000000
1	C8	CAP 100UF 16V 5%	1000000000
1	C9	CAP 100UF 16V 5%	1000000000
1	C10	CAP 100UF 16V 5%	1000000000
1	C11	CAP 100UF 16V 5%	1000000000
1	C12	CAP 100UF 16V 5%	1000000000
1	C13	CAP 100UF 16V 5%	1000000000
1	C14	CAP 100UF 16V 5%	1000000000
1	C15	CAP 100UF 16V 5%	1000000000
1	C16	CAP 100UF 16V 5%	1000000000
1	C17	CAP 100UF 16V 5%	1000000000
1	C18	CAP 100UF 16V 5%	1000000000
1	C19	CAP 100UF 16V 5%	1000000000
1	C20	CAP 100UF 16V 5%	1000000000
1	C21	CAP 100UF 16V 5%	1000000000
1	C22	CAP 100UF 16V 5%	1000000000
1	C23	CAP 100UF 16V 5%	1000000000
1	D1	DIODE D664	1000114
1	D2	DIODE D664	1000114
1	D3	DIODE D664	1000114
1	D4	DIODE D664	1000114
1	D5	DIODE D664	1000114
1	D6	DIODE D664	1000114
1	D7	DIODE D664	1000114
1	D8	DIODE D664	1000114
1	D9	DIODE D664	1000114
1	D10	DIODE D664	1000114
1	D11	DIODE D664	1000114
1	D12	DIODE D664	1000114
1	D13	DIODE D664	1000114
1	D14	DIODE D664	1000114

ITEM NO.	DESCRIPTION	QTY	UNIT
1	TRANSFORMER	1	EA
2	RES 1K 1/4W 5%	107	EA
3	CAP 100UF 16V 5%	23	EA
4	DIODE D664	14	EA

ITEM NO.	DESCRIPTION	QTY	UNIT
5	TRANSFORMER	1	EA
6	RES 1K 1/4W 5%	107	EA
7	CAP 100UF 16V 5%	23	EA
8	DIODE D664	14	EA

ITEM NO.	DESCRIPTION	QTY	UNIT
9	TRANSFORMER	1	EA
10	RES 1K 1/4W 5%	107	EA
11	CAP 100UF 16V 5%	23	EA
12	DIODE D664	14	EA

ITEM NO.	DESCRIPTION	QTY	UNIT
13	TRANSFORMER	1	EA
14	RES 1K 1/4W 5%	107	EA
15	CAP 100UF 16V 5%	23	EA
16	DIODE D664	14	EA

SEE NOTE 3













