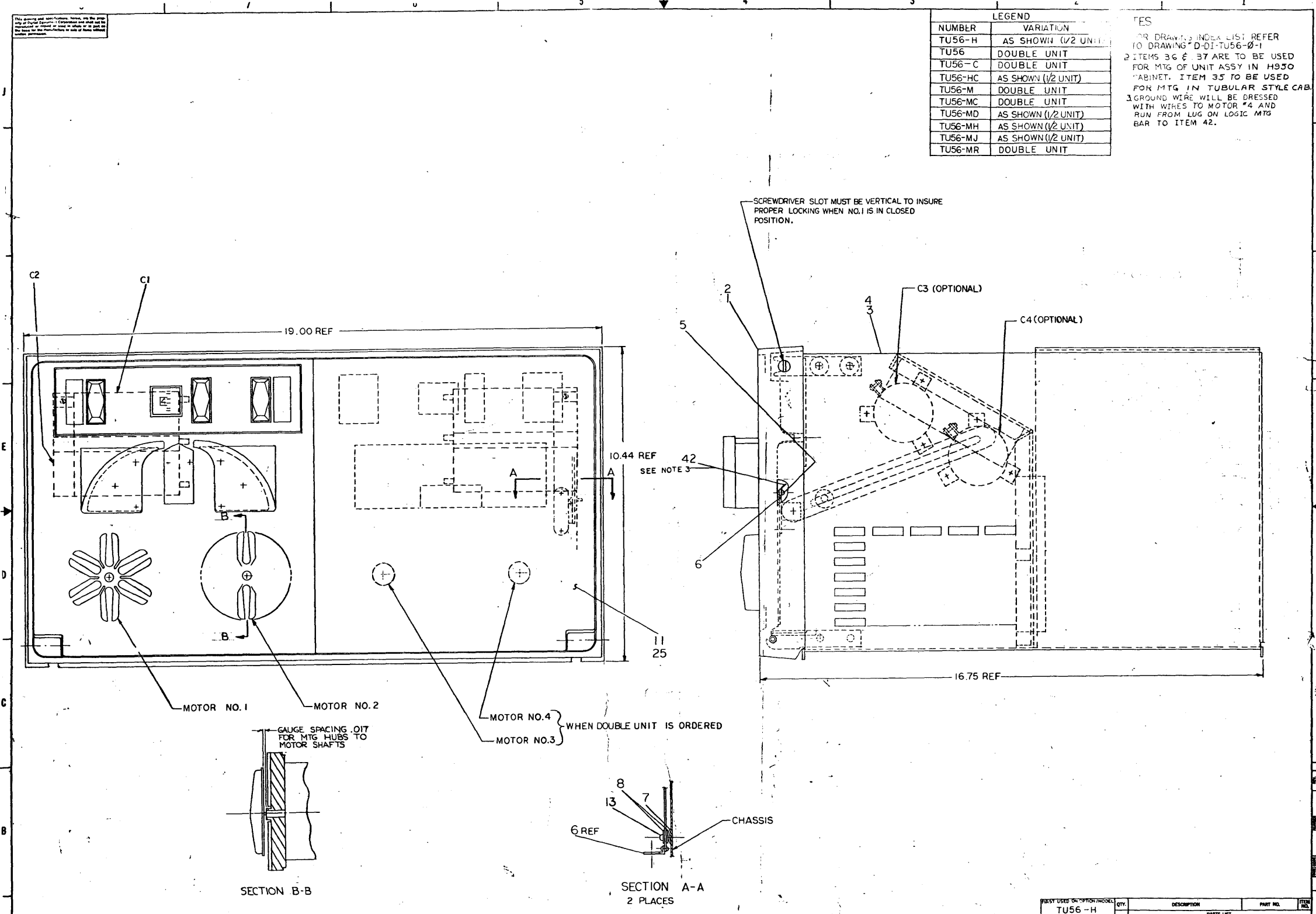


*S/N*  
TU56H 02-05410  
DECtape transport  
engineering drawings





LEGEND	
NUMBER	VARIATION
TU56-H	AS SHOWN (1/2 UNIT)
TU56	DOUBLE UNIT
TU56-C	DOUBLE UNIT
TU56-HC	AS SHOWN (1/2 UNIT)
TU56-M	DOUBLE UNIT
TU56-MC	DOUBLE UNIT
TU56-MD	AS SHOWN (1/2 UNIT)
TU56-MH	AS SHOWN (1/2 UNIT)
TU56-MJ	AS SHOWN (1/2 UNIT)
TU56-MR	DOUBLE UNIT

**NOTES**  
1. FOR DRAWING INDEX LIST REFER TO DRAWING D-DI-TU56-0-1  
2. ITEMS 36 & 37 ARE TO BE USED FOR MTG OF UNIT ASSY IN H930 CABINET. ITEM 35 TO BE USED FOR MTG IN TUBULAR STYLE CAB.  
3. GROUND WIRE WILL BE DRESSED WITH WIRES TO MOTOR #4 AND RUN FROM LUG ON LOGIC MTG BAR TO ITEM 42.

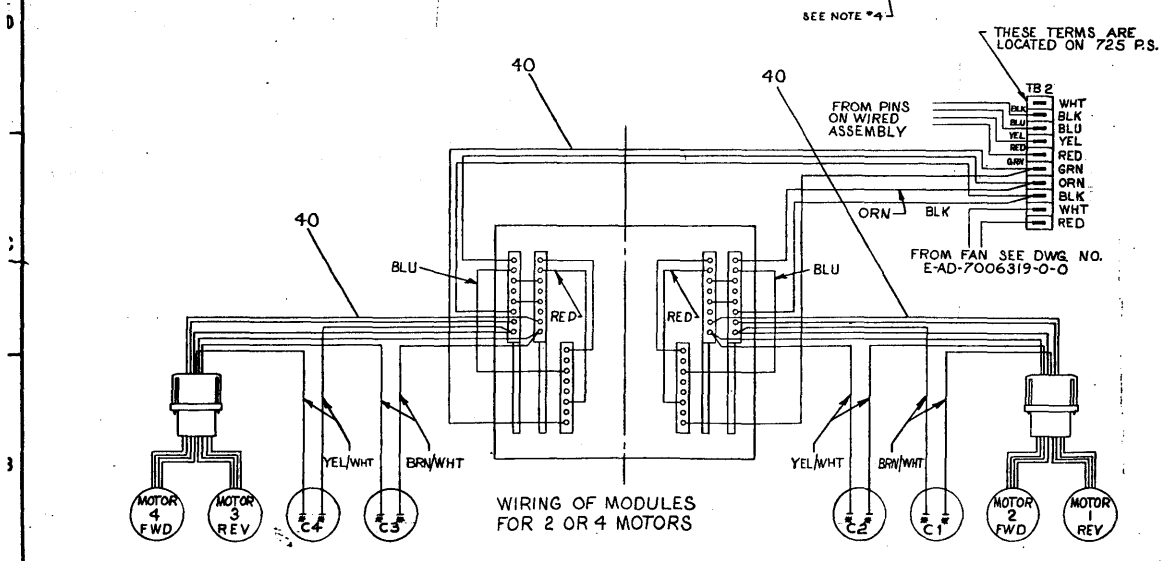
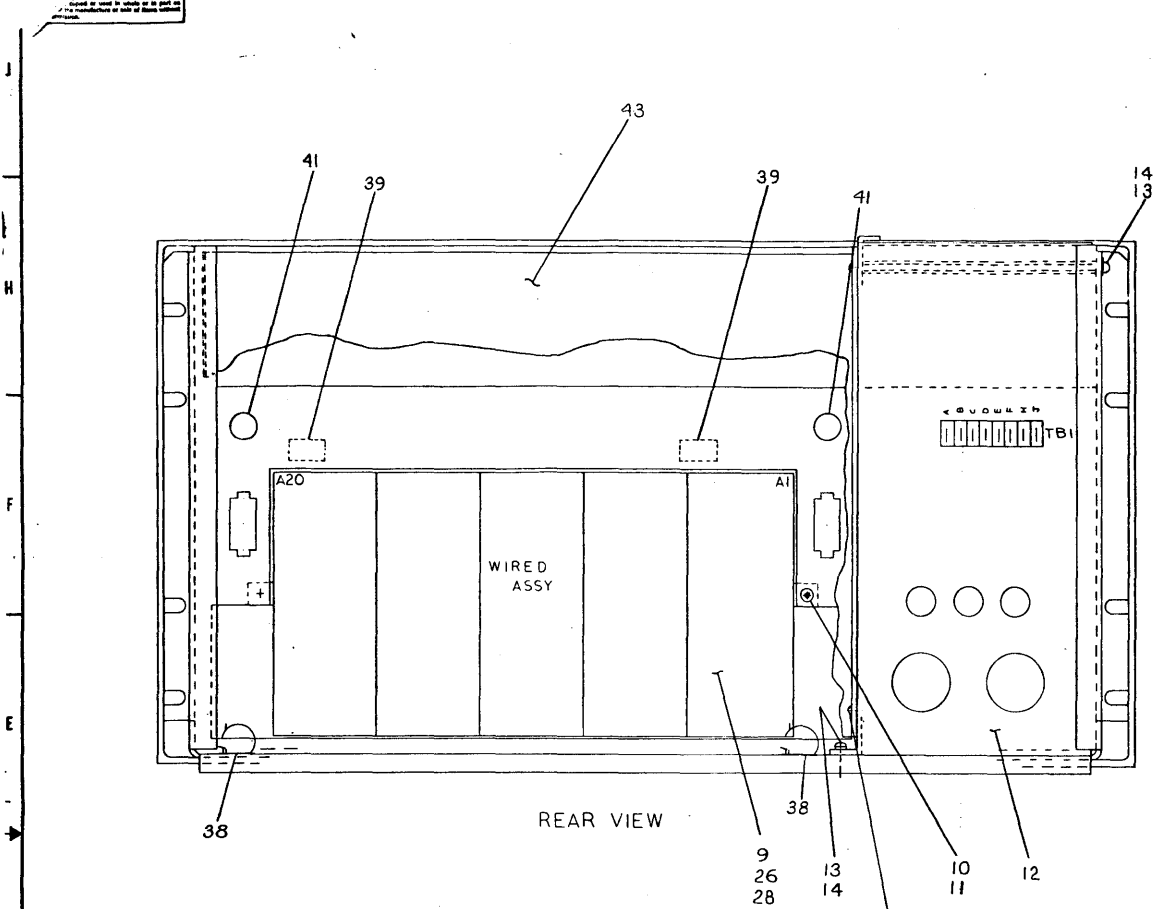
REV.	DATE	DESCRIPTION
1		TU56-00012 A
2		TU56-00012 B
3		TU56-00012 C
4		TU56-00012 D
5		TU56-00012 E
6		TU56-00012 F
7		TU56-00012 G
8		TU56-00012 H
9		TU56-00012 I
10		TU56-00012 J
11		TU56-00012 K
12		TU56-00012 L
13		TU56-00012 M
14		TU56-00012 N
15		TU56-00012 O
16		TU56-00012 P
17		TU56-00012 Q
18		TU56-00012 R
19		TU56-00012 S
20		TU56-00012 T
21		TU56-00012 U
22		TU56-00012 V
23		TU56-00012 W
24		TU56-00012 X
25		TU56-00012 Y
26		TU56-00012 Z
27		TU56-00012 AA
28		TU56-00012 AB
29		TU56-00012 AC
30		TU56-00012 AD
31		TU56-00012 AE
32		TU56-00012 AF
33		TU56-00012 AG
34		TU56-00012 AH
35		TU56-00012 AI
36		TU56-00012 AJ
37		TU56-00012 AK
38		TU56-00012 AL
39		TU56-00012 AM
40		TU56-00012 AN
41		TU56-00012 AO
42		TU56-00012 AP
43		TU56-00012 AQ
44		TU56-00012 AR
45		TU56-00012 AS
46		TU56-00012 AT
47		TU56-00012 AU
48		TU56-00012 AV
49		TU56-00012 AW
50		TU56-00012 AX
51		TU56-00012 AY
52		TU56-00012 AZ
53		TU56-00012 BA
54		TU56-00012 BB
55		TU56-00012 BC
56		TU56-00012 BD
57		TU56-00012 BE
58		TU56-00012 BF
59		TU56-00012 BG
60		TU56-00012 BH
61		TU56-00012 BI
62		TU56-00012 BJ
63		TU56-00012 BK
64		TU56-00012 BL
65		TU56-00012 BM
66		TU56-00012 BN
67		TU56-00012 BO
68		TU56-00012 BP
69		TU56-00012 BQ
70		TU56-00012 BR
71		TU56-00012 BS
72		TU56-00012 BT
73		TU56-00012 BU
74		TU56-00012 BV
75		TU56-00012 BW
76		TU56-00012 BX
77		TU56-00012 BY
78		TU56-00012 BZ
79		TU56-00012 CA
80		TU56-00012 CB
81		TU56-00012 CC
82		TU56-00012 CD
83		TU56-00012 CE
84		TU56-00012 CF
85		TU56-00012 CG
86		TU56-00012 CH
87		TU56-00012 CI
88		TU56-00012 CJ
89		TU56-00012 CK
90		TU56-00012 CL
91		TU56-00012 CM
92		TU56-00012 CN
93		TU56-00012 CO
94		TU56-00012 CP
95		TU56-00012 CQ
96		TU56-00012 CR
97		TU56-00012 CS
98		TU56-00012 CT
99		TU56-00012 CU
100		TU56-00012 CV
101		TU56-00012 CW
102		TU56-00012 CX
103		TU56-00012 CY
104		TU56-00012 CZ

REV.	DATE	DESCRIPTION	QTY.	DESCRIPTION	PART NO.	REV.
1		TU56-H				
TOLERANCES DECIMALS						
UNLESS OTHERWISE SPECIFIED						
DESCRIPTION IN INCHES						
TOLERANCES						
XX.X ± .005						
XX.XX ± .02						
X ± .1						
MATERIAL						
NEXT HIGHER ASSY						
A-ML-TU56-H						
SCALE 1/1						
SHEET 1 OF 2						

**CHRYSLER EQUIPMENT CORPORATION**  
TU56 ASSEMBLY

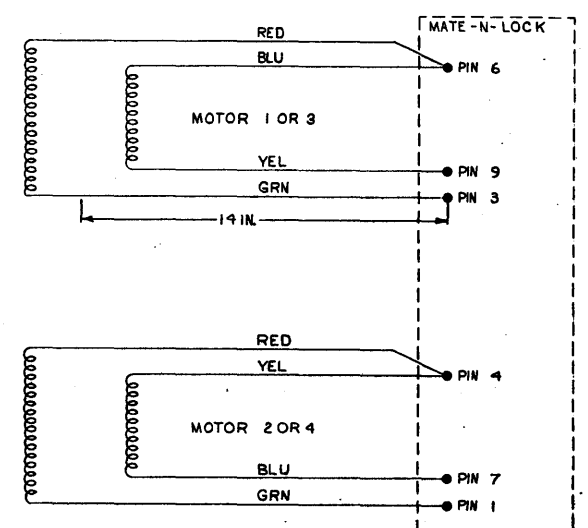
TU56-0-0

8 7 6 5 4 3 2 1



**NOTES:**  
 1. MOTORS SUPPLIED WITH WIRES PART NO. 33 TO BE CRIMPED ON WIRE AND INSERTED INTO PART NO. 30 AT ASSEMBLY.  
 2. \*ASTERISK INDICATES WIRES TO BE SOLDERED IN PLACE AT POINT INDICATED  
 3. ITEM NO. 24 NOT SHOWN/USE WHERE REQ'D  
 4. SCREWS (2) HOLD ITEM 43, SHIPPING BRACKET. WHEN BRACKET IS REMOVED AFTER SHIPMENT, REPLACE SCREWS.

MOTOR WIRING DIAGRAM



THE LETTER 'F' IS TO BE MARKED ON THE BACK OF MOTORS 2 & 4 WHEN ASSEMBLED

REV.	DESCRIPTION	DATE	BY
01	GULICK	0-7-69	
02	HEALY	0-19-69	
03	VAILLANT	0-26-69	
04	TOTTIG	0-26-69	
05	TOMPKINS	0-26-69	

UNLESS OTHERWISE SPECIFIED	ALL DIMENSIONS IN INCHES
UNLESS OTHERWISE SPECIFIED	FINISHES BY NUMBER
UNLESS OTHERWISE SPECIFIED	STRAIGHTENED SURFACES ARE TO BE FINISHED TO THE FOLLOWING TOLERANCES
FINISH	TOLERANCE
---	±.0005
---	±.001
---	±.002
---	±.005
---	±.01
---	±.02
---	±.05
---	±.1
---	±.2
---	±.5
---	±1.0
---	±2.0
---	±5.0
---	±10.0

DATE	DESCRIPTION	REV.
0-7-69	GULICK	01
0-19-69	HEALY	02
0-26-69	VAILLANT	03
0-26-69	TOTTIG	04
0-26-69	TOMPKINS	05

DESIGNED BY	DATE	SCALE	NUMBER
EUA	0-7-69	NONE	1
DRAWN BY	DATE	SCALE	NUMBER
CHECKED BY	DATE	SCALE	NUMBER
APPROVED BY	DATE	SCALE	NUMBER

8 7 6 5 4 3 2 1

TU56-0-0

A

2

DIGITAL EQUIPMENT CORPORATION MAYNARD, MASSACHUSETTS <b>PARTS LIST</b>				QUANTITY / VARIATION											
MADE BY KEN GULICK		CHECKED D. HEALEY		SECTION											
DATE 8/6/69		DATE 8/18/69		1											
ENG C. VALLIANT		PROD C. TOMPKINS		ISSUED SECT.											
DATE 8/26/69		DATE 8/26/69		1		TU56-H	TU56	TU56-M	TU56-MR	TU56-HC	TU56-C	TU56-MD	TU56-MC	TU56-MH	TU56-MJ
ITEM NO.	DWG NO. / PART NO.	DESCRIPTION													
1	E-AD-7006320-1-0	PANEL FRONT ASSEMBLY				1	-	-	-	1		1		-	-
2	E-AD-7006320-2-0	PANEL FRONT ASSEMBLY				-	1	-	-		1		1	-	-
3	E-AD-7006319-1-0	CHASSIS ASSEMBLY				1	-	-	-	1		1		-	-
4	E-AD-7006319-2-0	CHASSIS ASSEMBLY				-	1	-	-		1		1	-	-
5	9006070-1	SCR PAN 10-32 x 3/8 LG SST				4	4	4	4	4	4	4	4	4	4
6	1209600	LID SUPPORT #43067 CHANDLER & FARQUHAR				2	2	2	2	2	2	2	2	2	2
7	9008135	WASH CURVED #U250-0075 ASSOC SPR				2	2	2	2	2	2	2	2	2	2
8	9008146	WASH FLAT .630.D.X.23I.D.X.048 THK SST				4	4	4	4	4	4	4	4	4	4
9	D-AD-7006321-0-0	WIRED ASSY TU56				1	1	1	1	1	1	1	1	1	1
10	9006075-1	SCR PHL HD PAN #10-32 X 3/4 LG SST				2	2	2	2	2	2	2	2	2	2
11	9006565	NUT KEPS #10-32				6	2	2	2	6	2	6	2	6	6
12	D-UA-725-0-0	POWER SUPPLY 725 +				1	1	1	1	1	1	1	1	1	1
13	9006021-1	SCR PHL HD PAN 6-32 X 5/16 LG SST				5	5	5	5	5	5	5	5	5	5
14	9007651	WASH EXT TOOTH #6 HOLE				3	3	3	3	3	3	3	3	3	3
15	9007917	CONN SOLDERLESS #50902 ARKLESS				32	64	64	64	32	64	32	64	32	32
16	9007193	CONN SOLDERLESS #3000541B				3	6	6	6	3	6	3	6	3	3
<del>17</del>	<del>9107360-55</del>	<del>WIRE #18 AWG STRD TEFLON INS (GRN)</del>				<del>AR</del>	<del>AR</del>			<del>AR</del>	<del>AR</del>	<del>AR</del>	<del>AR</del>	<del>AR</del>	<del>AR</del>
<del>18</del>	<del>9107360-33</del>	<del>WIRE #18 AWG STRD TEFLON INS (ORN)</del>				<del>AR</del>	<del>AR</del>			<del>AR</del>	<del>AR</del>	<del>AR</del>	<del>AR</del>	<del>AR</del>	<del>AR</del>
<del>19</del>	<del>9107360-45</del>	<del>WIRE #18 AWG STRD TEFLON INS (YEL/WH)</del>				<del>AR</del>	<del>AR</del>			<del>AR</del>	<del>AR</del>	<del>AR</del>	<del>AR</del>	<del>AR</del>	<del>AR</del>
20	9107360-00	WIRE #18 AWG STRD TEFLON INS (BLK)				AR	AR	A/R	A/R	AR	AR	AR	AR	A/R	A/R
21	9107360-66	WIRE #18 AWG STRD TEFLON INS (BLU)				AR	AR								
22	9107360-22	WIRE #18 AWG STRD TEFLON INS (RED)				AR	AR								
TITLE TU56 ASSEMBLY				ASSY NO. E-UA-TU56-0-0		SIZE CODE A PL		NUMBER TU56-0-0				REV. N		ECO NO. TU56-0007.8	
				SHEET 1 OF 3		DIST.									

DIGITAL EQUIPMENT CORPORATION MAYNARD, MASSACHUSETTS <b>PARTS LIST</b>				QUANTITY / VARIATION											
MADE BY KEN GULICK		CHECKED D. HEALEY		SECTION											
DATE 8/6/71		DATE 8/19/71		1											
ENG C. VALLIANT		PROD E.R. TOMPKINS		ISSUED SECT.											
DATE 8/26/69		DATE 8/26/69		1		TU56-H	TU56	TU56-M	TU56-MR	TU56-HC	TU56-C	TU56-MD	TU56-MC	TU56-MH	TU56-MJ
ITEM NO.	DWG NO. / PART NO.	DESCRIPTION													
<del>23</del>	<del>9007430-56</del>	<del>WIRE #18 AWG STRD TEFLON INS BLU/GRN</del>				<del>AR</del>	<del>AR</del>								
<del>24</del>	<del>9007031</del>	<del>TIE WRAP #33T-10 PANDUIT</del>				<del>AR</del>	<del>AR</del>			<del>AR</del>	<del>AR</del>	<del>AR</del>	<del>AR</del>	<del>AR</del>	<del>AR</del>
25	D-IA-7407534-0-0	COVER PLATE - HALF				1	-	-	-	1		1		-	-
26	C-IA-7405152-1-0	INFO CABLE				1	1	1	1					1	1
<del>27</del>	<del>D-IA-7006223-0-0</del>	<del>INTERCONNECTION CABLE</del>				<del>1</del>	<del>1</del>	<del>1</del>	<del>1</del>	<del>1</del>	<del>1</del>	<del>1</del>	<del>1</del>	<del>1</del>	<del>1</del>
28	D-UA-BC02X-3-0	CABLE RIBBON M908-M908				1	1	1	1					1	1
<del>29</del>	<del>7006697</del>	<del>TU56 MOTOR CONNECTOR CABLE</del>				<del>1</del>	<del>1</del>			<del>1</del>	<del>2</del>	<del>1</del>	<del>2</del>		
30	1209351-09	MATE-N-LOCK SOCKET HOUSING (9 PIN)				1	2	2	2	1	2	1	2	1	1
<del>31</del>	<del>7006695</del>	<del>TU56 CARD CONNECTOR CABLE (R)</del>				<del>0</del>	<del>1</del>			<del>1</del>		<del>1</del>			
*	D-IA-7006412-0-0	OPTION CABLE TU56				1	1	1	1					1	1
<del>32</del>	<del>7006696</del>	<del>TU56 CARD CONNECTOR CABLE (L)</del>				<del>1</del>	<del>1</del>			<del>1</del>	<del>1</del>	<del>1</del>	<del>1</del>		
33	1209378	PIN, CONNECTOR				8	16	16	16	8	16	8	16	8	8
34**	C-IA-7408007-0-0	BRACKET, RT, ANGLE SUPPORT				2	2	2	2			2	2	2	2
35**	E-IA-7408009-0-0	SPACER, MTG BRACKET				1	1	1	1			1	1	1	1
36**	C-MD-7408322-0-0	SPACER BLOCK				2	2	2	2	2	2	2	2	2	2
37**	C-MD-7408321-0-0	MOUNTING BRACKET				1	1	1	1	1	1	1	1	1	1
38	9008340-0	DEKLASP PVC HARNESS CLASP (DK 1/2-375F)				2	2	2	2	2	2	2	2	2	2
39	9008341-0	DEKLASP PVC HARNESS CLASP (DK -188F)				2	2	2	2	2	2	2	2	2	2
40	7006981-0-0	TU56 WIRING HARNESS				1	1	1	1	1	1	1	1	1	1
41	9007016	GROMMET				2	2	2	2	2	2	2	2	2	2
42	9008150	LUG #10 COPPER, TIN PLATED				1	1	1	1	1	1	1	1	1	1
REF	E-AD-7008487-2	TABLE TOP COVER ASSY. (TDCOV KIT)								1					1
TITLE TU56 ASSEMBLY				ASSY NO. E-UA-TU56-0-0		SIZE CODE A PL		NUMBER TU56-0-0				REV. N		ECO NO.	
				SHEET 2 OF 3		DIST.									

**DIGITAL EQUIPMENT CORPORATION**  
MAYNARD, MASSACHUSETTS  
**PARTS LIST**

QUANTITY / VARIATION

<b>MADE BY</b> KEN GULICK			<b>CHECKED</b> D. HEALEY			<b>SECTION</b>		
<b>DATE</b> 8/6/69			<b>DATE</b> 8/19/69					
<b>ENG</b> C. VALLIANT			<b>PROD</b> E. R. TOMPKINS			<b>ISSUED SECT.</b>		
<b>DATE</b> 8/26/69			<b>DATE</b> 8/26/69					

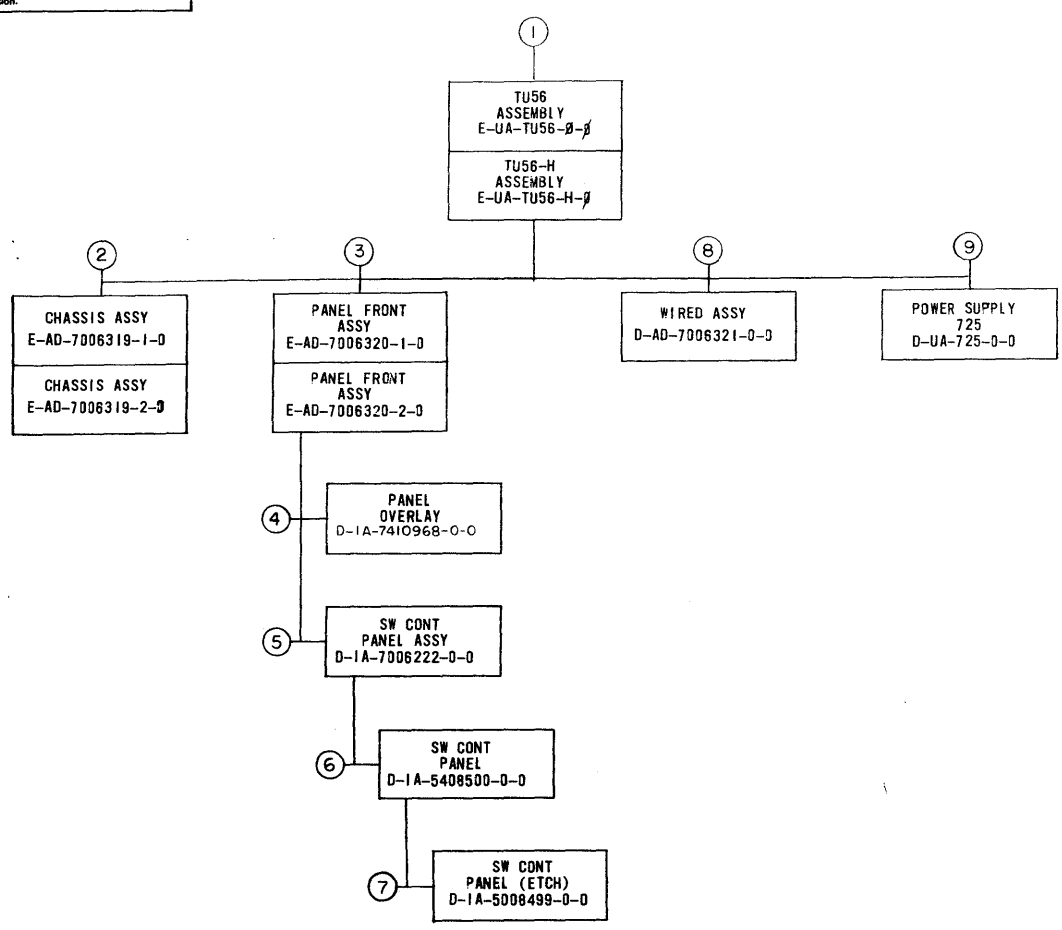
  

ITEM NO.	DWG NO. / PART NO.	DESCRIPTION	TU56-H	TU56	TU56-M	TU56-MR	TU56-HC	TU56-C	TU56-MD	TU56-MC	TU56-MH	TU56-MJ		
43	C-IA-7408211-0-0	SHIPPING BRACKET	1	1	1	1	1	1	1	1	1	1		
44	I209331	DECTAPE TAKE-UP REEL	1	2	2	2	1	2	1	2	1	1		
+	USE 725-0 POWER SUPPLY FOR 115 VAC OPERATION.													
+	USE 725-A POWER SUPPLY FOR 230 VAC OPERATION.													
*	IF CABLE ITEM #26 IS NOT USED REPLACE WITH CABLE THAT IS <del>ASTERISKED</del>													
	SEE D-MU-TU56-Ø-MU													
**	USE THIS PART WHEN MTG UNIT IN CAB H950													
***	USE THIS PART WHEN MTG UNIT IN TUBULAR STYLE CABINETS													

<b>TITLE</b>	<b>ASSY NO.</b>	<b>SIZE CODE</b>	<b>NUMBER</b>	<b>REV.</b>	<b>ECO NO.</b>
TU56 ASSEMBLY	E-UA-TU56-Ø-Ø	<b>A PL</b>	TU56-Ø-Ø	N	
	<b>SHEET</b> 3 <b>OF</b> 3	<b>DIST.</b>			

This drawing and specifications, herein, are the property of Digital Equipment Corporation and shall not be reproduced or copied or used in whole or in part as the basis for the manufacture or sale of items without written permission.



MECHANICAL				DEPT USAGE			ELECTRICAL				DEPT USAGE		
FIND NO.	DESCRIPTION	PART NO.	PROD	CUST	F/C	FIND NO.	DESCRIPTION	PART NO.	PROD	CUST	F/C		
1.	TU56 ASSEMBLY	D-UA-TU56-0-0				1.	TU56	A-ML-TU56-0					
	TU56 ASSEMBLY	A-PL-TU56-0-0					MODULE UTILIZATION (TU56)	D-MU-TU56-0-MU					
	CABLE RIBBON M928-M929	D-UA-BC2X-3-0					MODULE UTILIZATION (TU56) (PL)	A-PL-TU56-0-MU					
	HALF COVER PLATE (TU56-H)	D-1A-7407534-0-0					TRANSPORT LOGIC DIAGRAM	D-BS-TU56-0-TLD					
	INFO CONN	C-1A-7405152-1-0					TU56 DEC TAPE	K-WL-TU56-0-2					
	INTERCONNECTION CABLE TU56	C-1A-7006223-0-0					ACCESSORY LIST	A-AL-TU56-0-5					
	OPTIONAL CABLE TU56	D-1A-7006412-0-0					ACCEPTANCE PROCEDURE	A-SF-TU56-0-6					
	MOUNTING BRACKET	C-MD-7408321-0-0				2.	CHASSIS ASSY	E-AD-7006319-1-0					
	SPACER BLOCK	C-MD-7408322-0-0					CHASSIS ASSY	E-AD-7006319-2-0					
	WIRING HARNESS	E-1A-7006981-0-0				3.	FRONT PANEL ASSY	E-AD-7006320-1-0					
	PACKAGING INSTRUCTION TU56 CUSTOMER	A-PI-3700022-0-0					FRONT PANEL ASSY	E-AD-7006320-2-0					
	PACKAGING INSTRUCTION TU56 INTERPLANT	A-PI-3700063-0-0				6.	CIRCUIT SCHEMATIC	C-CS-5408500-0-1					
	SHIPPING BRACKET	C-1A-7408211-0-0				8.	WIRED ASSY TU56	D-AD-7006321-0-0					
	UL REQUIREMENTS	A-SP-7665118-0-0					WIRED ASSY TU56	A-PL-7006321-0-0					
2.	CHASSIS ASSY (TU56)	E-AD-7006319-1-0				9.	CIRCUIT SCHEMATIC 725	C-CS-725-0-0					
	CHASSIS ASSY (TU56-H)	E-AD-7006319-2-0											
	SCREEN FAN	C-MD-7404881-0-0											
	CHASSIS ASSY (PL)(TU56)	A-PL-7006319-1-0											
	CHASSIS ASSY (PL)(TU56-H)	A-PL-7006319-2-0											
	CHASSIS	E-1A-7407391-0-0											
	LOCK, PANEL	C-MD-7407399-0-0											
3.	PANEL FRONT ASSY (TU56)	E-AD-7006320-1-0											
	PANEL FRONT ASSY (TU56-H)	E-AD-7006320-2-0											
	PANEL FRONT ASSY (PL)(TU56)	A-PL-7006320-1-0											
	PANEL FRONT ASSY (PL)(TU56-H)	A-PL-7006320-2-0											
	PANEL, MTG	E-MD-7407395-0-0											
	TAPE GUIDE (R.H.)	C-MD-7407283-1-0											
	TAPE GUIDE (L.H.)	C-MD-7407283-2-0											
	COVER PLATE (R.H.)	C-MD-7407282-1-0											
	COVER PLATE (L.H.)	C-MD-7407282-2-0											
	WEAR PLATE (R.H.)	B-MD-7405114-1-0											
	WEAR PLATE (L.H.)	B-MD-7405114-2-0											
	REAR CHECK TAPE GUIDE (L.H.)	C-MD-7405136-1-0											
	REAR CHECK TAPE GUIDE (R.H.)	C-MD-7405136-2-0											
	PIN, LOCK	B-MD-7407400-0-0											
	HUB ASSY 6FT CONTACT	C-1A-7407390-0-0											
	HUB GAUGE	C-1A-7408010-0-0											
	GUARD PLATE	C-MA-7408287-0-0											
4.	PANEL OVERLAY	D-1A-7410968-0-0											
	SILK SCREEN (WHITE)	C-55-7410968-0-1											
	SILK SCREEN (BLACK)	C-55-7410968-0-2											
5.	SWITCH CONTROL PANEL ASSY	D-1A-7006222-0-0											
6.	SWITCH CONTROL PANEL	D-1A-5408500-0-0											
7.	SWITCH CONTROL PANEL (ETCH)	D-1A-5008499-0-0											
8.	WIRED ASSY	D-AD-7006321-0-0											
	WIRED ASSY TU56 (PL)	A-PL-7006321-0-0											
	MTG BAR (5 BLOCKS) TU56	C-1A-7407393-0-0											
9.	POWER SUPPLY 725	D-UA-725-0-0											
	POWER SUPPLY 725 (PL)	A-PL-725-0-0											

REV	CHG	NO.	DATE	BY	APP	DESCRIPTION
A	1	00015	1/24/70	C. VAILLANT		REVISED TO 2-26-70
B	1	00022	4/24/70	E. LUTTIG		REVISED TO 5-17-70
C	1	00032	7/14/70	T. BULLOCK		REVISED TO 8-17-70
D	1	00035	7/15/70	T. BULLOCK		REVISED TO 8-17-70
E	1	00037	8/5/70	VAILLANT		REVISED TO 8-17-70
F	1	00050	8/17/70	VAILLANT		REVISED TO 8-17-70
G	1	00051	8/17/70	LUTTIG		REVISED TO 8-17-70
H	1	00052	8/17/70	LUTTIG		REVISED TO 8-17-70
I	1	00052	8-18-71	LUTTIG		REVISED TO 8-18-71
J	1	3700022-1	2/24/71	LUTTIG		REVISED TO 2/24/71
K	1	00068	3-9-71	LAWRENCE		REVISED TO 3-9-71
L	1	00071	5/1/72	BERNIER		REVISED TO 5/1/72
M	1	00072	5/1/72	BERNIER		REVISED TO 5/1/72
N	1	00076	5/1/72	BERNIER		REVISED TO 5/1/72
O	1	00077	4-5-73	H. DRAB		REVISED TO 4-5-73
P	1	00077	4-27-73	H. DRAB		REVISED TO 4-27-73
Q	1	00077	5-1-73	H. DRAB		REVISED TO 5-1-73


FIRST USED ON OPTION/MODEL TU56	QTY.	DESCRIPTION	PART NO.	ITEM NO.
PARTS LIST				
UNLESS OTHERWISE SPECIFIED				
DIMENSION IN INCHES				
TOLERANCES				
DECIMALS ± .005	FRACTIONS ± 1/64	ANGLES ± 0°30'		
FINAL SURFACE QUALITY				
REMOVE BURRS AND BREAK SHARP CORNERS				
MATERIAL	NEXT HIGHER ASSY A-ML-TU56-0			
FINISH	SCALE	SHEET	OF	DIST.

**DWG INDEX LIST**  
TU56

SIZE CODE: DDI TU56-0-1  
NUMBER: 1  
REV: P

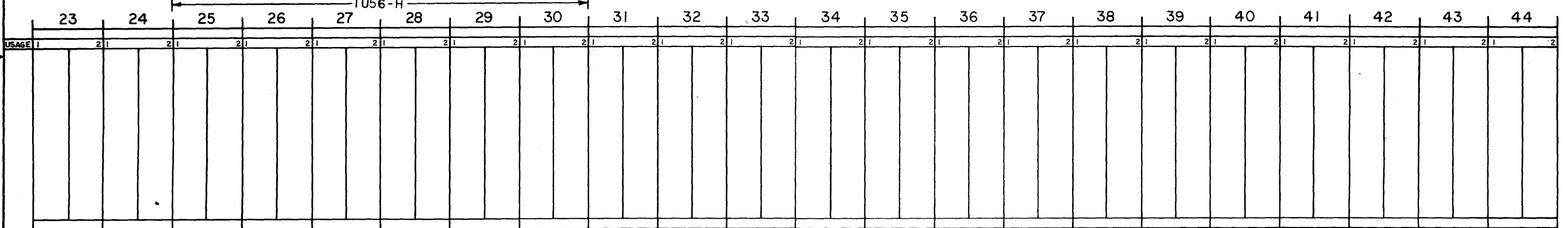
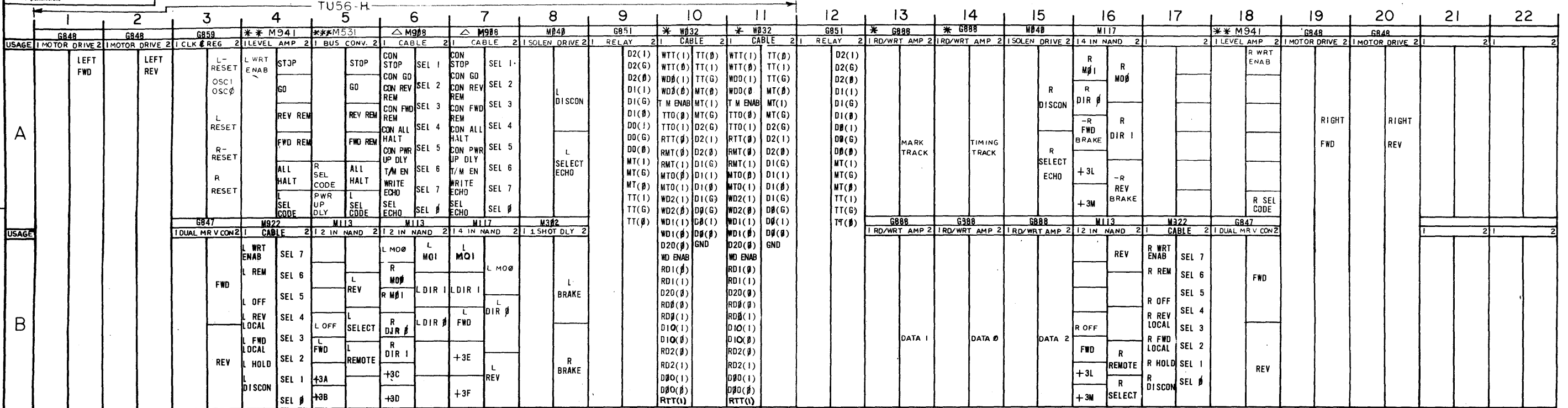
DRWG NO	REVLTR
K-WL-TU56-Ø-2	A

REVISIONS			
REV LTR	ECO NO	DATE	ENG
A	TU56-00005	12-8-69	E.K.

FIRST USED ON OPTION/MODEL TU56	DRAWN GULICK	DATE 7-8-69	 <b>digital</b> EQUIPMENT CORPORATION MAYNARD, MASSACHUSETTS	TITLE TU56 DEC TAPE
	CHECKED <i>D. Nolan</i>	DATE 8-20-69		FOR TAPE* FILE*
	ENG <i>E. Lutting</i>	DATE 8/25/69		SIZE CODE DWG. NO. K WL TU56-Ø-2
	PROJ ENG <i>E. Lutting</i>	DATE 8/25/69		REV LTR A
	PROD <i>E. R. Tompkins</i>	DATE 8/25/69		SCALE NONE SHEET 1 OF 1 DIST.



This drawing and specifications, herein, are the property of Digital Equipment Corporation and shall not be reproduced or copied or used in whole or in part as the basis for the manufacture or sale of items without written permission.



23	24	25	26	27	28	29	30	31	32	33	34	35	36	37	38	39	40	41	42	43	44
USAGE	2	2	2	2	2	2	2	2	2	2	2	2	2	2	2	2	2	2	2	2	2

REV.	CHK	CHANGE NO.	DATE
A		TU56-00009	1-8-70
B		TU56-00026	2-2-70
C		TU56-00028	5-22-70
D		TU56-00044	9-29-70
E		TU56-00054	11-17-70
F		TU56-00067	3-1-71
G		TU56-00072	3-20-72
H		TU56-00072	3-20-72

△ IF CONN. TO ANOTHER TU56 USE CABLE \*D-UA-BC02X-3-0. IF CONN. TO TU55 USE CABLE \*D-IA-7006223-0-0

\*\* THE M941 JUMPER MODULES ARE REPLACED WITH W513 LEVEL AMPLIFIER MODULES WHEN THE TU56 IS CONNECTED TO A RELAY DRIVER TYPE CONTROL.  
 \*\*\* 0742 JUMPER CARD REPLACES M531 WHEN TU56 IS USED WITH POSITIVE OUTPUT LOGIC CONTROL

IF TU56 IS REQ'D USE ALL MODULES & CABLES SHOWN WITH THE EXCEPTION OF NOTES LISTED ABOVE. IF TU56-H IS REQ'D ONLY MODULES & CABLES IND. BY ARROWS ARE USED

FIRST USED ON OPTION/MODEL  
TU56

DO NOT SCALE DRAWING	UNLESS OTHERWISE SPECIFIED DIMENSION IN INCHES	TOLERANCES	ANGLES
FINISH	MATERIAL	SCALE	SHEET

digital EQUIPMENT CORPORATION  
 MAYNARD, MASSACHUSETTS

TITLE  
MODULE UTILIZATION

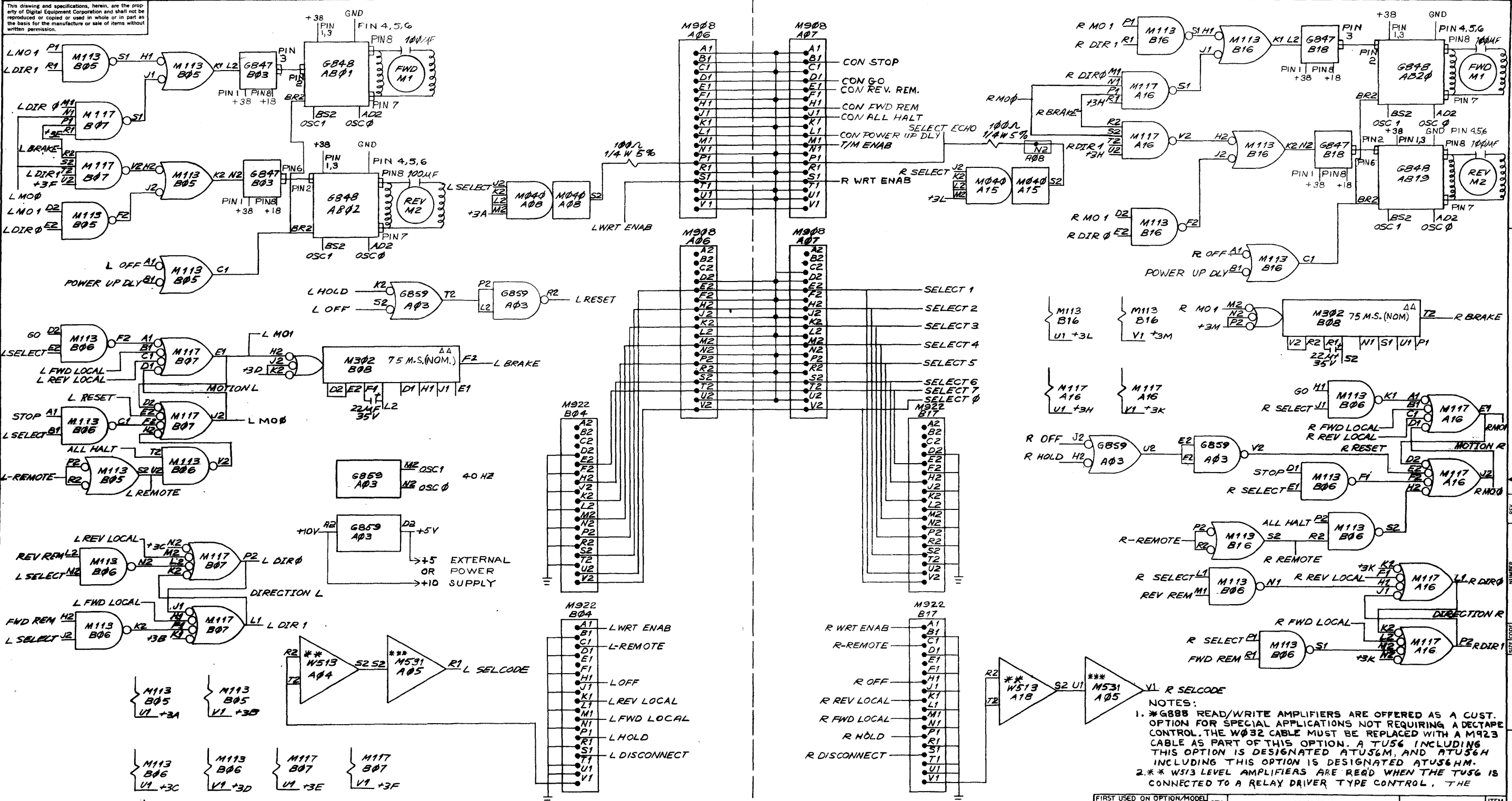
NUMBER  
TU56-0-MU

REV  
H

DIGITAL EQUIPMENT CORPORATION MAYNARD, MASSACHUSETTS				QUANTITY / VARIATION											
PARTS LIST				TU56-Ø-MU	TU56-H-MU	TU56-M-MU	TU56-MH-MU	TU56-MR-MU	TU56-MJ-MU	TU56-C-MU	TU56-HC-MU	TU56-MC-MU	TU56-MD-MU		
MADE BY R. RYTHER		CHECKED D. HEALY		SECTION											
DATE 7/23/69		DATE 8/6/69		1											
ENG <i>e. J. ...</i>		PROD <i>e. J. ...</i>		ISSUED SECT.											
DATE 8/26/69		DATE 8/26/69		1											
ITEM NO.	DWG NO. / PART NO.	DESCRIPTION													
	G859	CLOCK REGULATOR G859		1	1	1	1	1	1	1	1	1	1		
	W513	LEVEL AMPLIFIER W513*		2	1	2	1	2	1	0	0	0	0		
	<del>M5Ø7</del>	<del>BUS CONVERTER M5Ø7</del>		<del>2</del>	<del>2</del>										
	M531	NEGATIVE INPUT CONVERTER		1	1	1	1	1	1	0	0	0	0		
	MØ4Ø	SOLENOID DRIVER MØ4Ø		2	1	2	1	2	1	2	1	2	1		
	G851	RELAY G851		2	1	2	1	2	1	2	1	2	1		
	G888	MANCHESTER READER, WRITER G888		Ø	Ø	5	5	5	5	0	0	5	5		
	M117	5-INPUT NAND GATES M117		2	1	2	1	2	1	2	1	2	1		
	M113	10-2 INPUT NAND GATES M113		3	2	3	2	3	2	3	2	3	2		
	M3Ø2	DUAL DELAY MULTIVIBRATOR M3Ø2		1	1	1	1	1	1	1	1	1	1		
	G848	MOTOR DRIVE		4	2	4	2	4	2	4	2	4	2		
	G847	DUAL MOTOR CON		2	1	2	1	2	1	2	1	2	1		
	M941	JUMPER/EXTENDER		2	1	2	1	2	1	2	1	2	1		
	G742	+ LOGIC JUMPER		1	1	1	1	1	1	1	1	1	1		
	* NOTE: SEE	D-MU-TU56-Ø-MU													
TITLE MODULE UTILIZATION LIST				ASSY NO. D-MU-TU56-Ø-MU		SIZE CODE A PL		NUMBER TU56-Ø-MU				REV. H		ECO NO. TU56-00072	
SHEET 1 OF 1				DIST.											

DEC FORM NO. DRA 110

This drawing and specifications, herein, are the property of Digital Equipment Corporation and shall not be reproduced or copied in whole or in part as the basis for the manufacture or sale of items without written permission.



REV.	CHANGE NO.	DESCRIPTION
1	00005	A
2	00008	B
3	00010	C
4	00009	D
5	00021	E
6	00044	F
7	00054	G
8	00070	H
9	00071	I
10	00057	J
11	00071	K
12	00070	L
13	00071	M
14	00071	N
15	00071	O
16	00071	P
17	00071	Q
18	00071	R
19	00071	S
20	00071	T
21	00071	U
22	00071	V
23	00071	W
24	00071	X
25	00071	Y
26	00071	Z

LEFT HAND TRANSPORT

RIGHT HAND TRANSPORT

2. CONT.

3. \*\*G742 JUMPER CARD REPLACES M531 WHEN TU56 IS USED WITH POS OUTPUT LOGIC CONTROL.

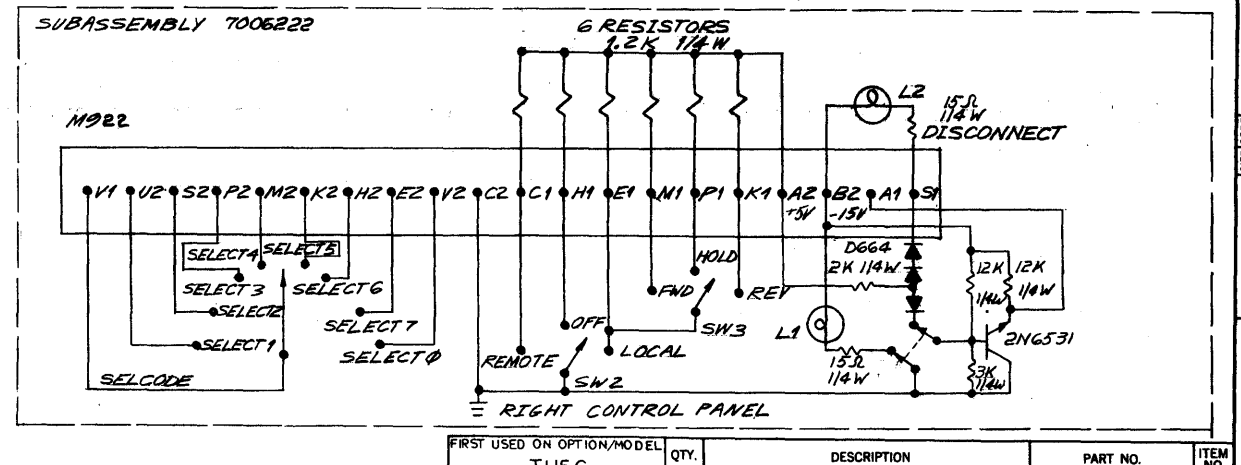
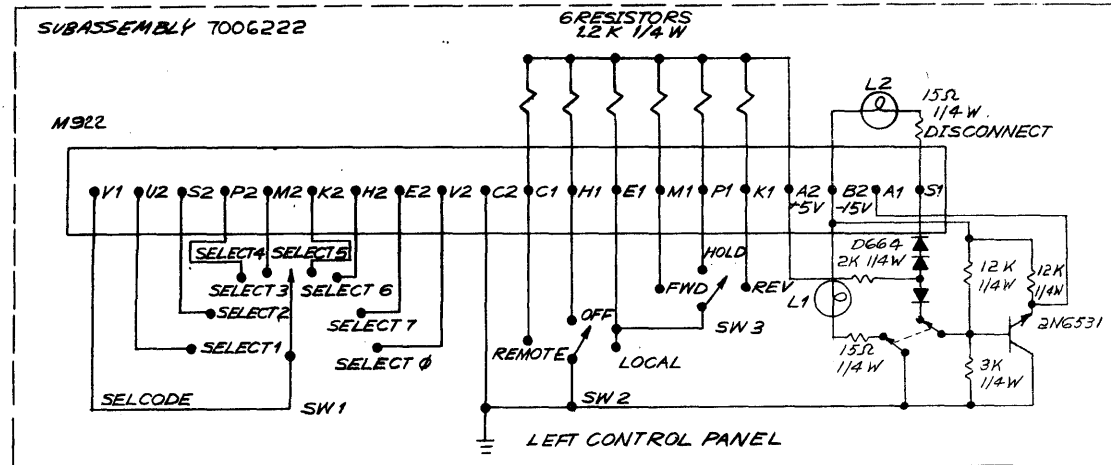
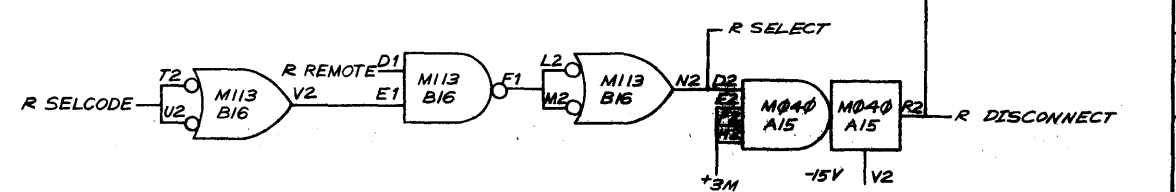
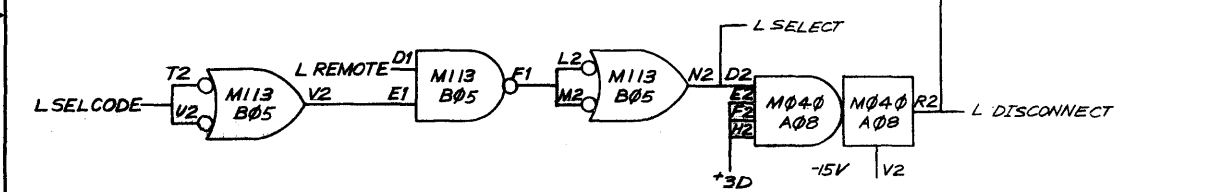
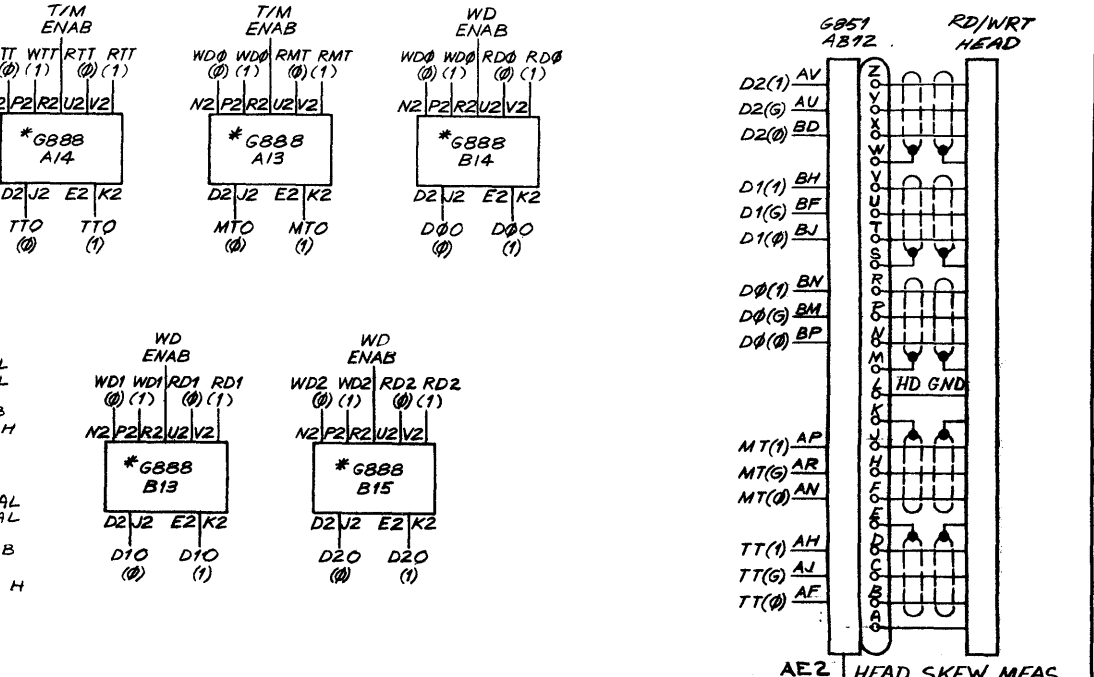
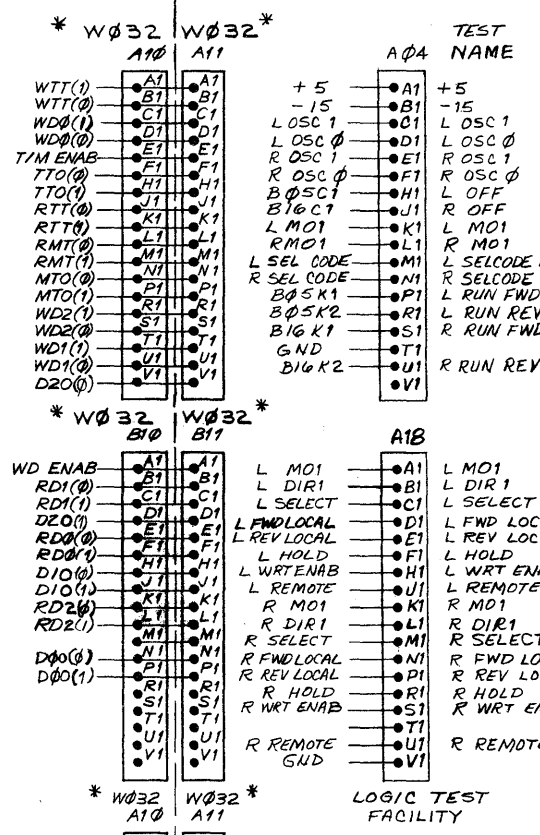
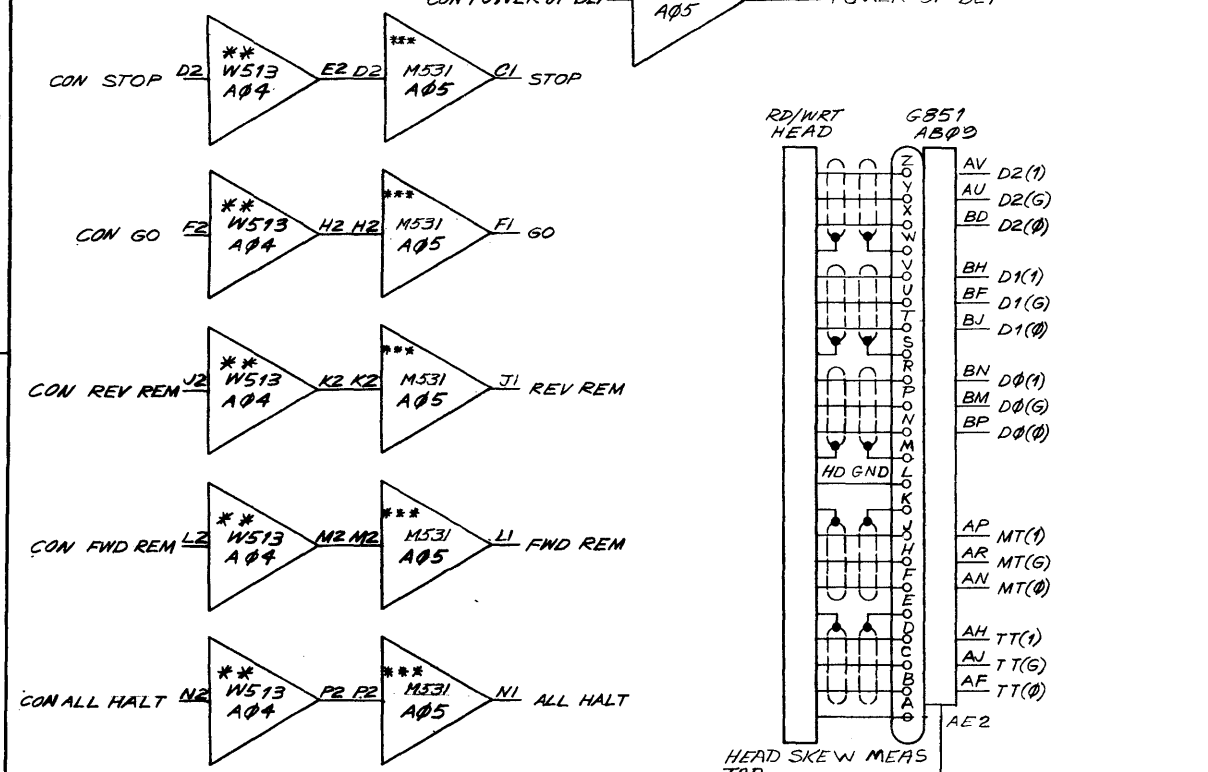
4. +5V MUST BE SUPPLIED BY EXTERNAL P.S. WHEN G888'S ARE INSTALLED IN TU56.

5. ΔΔ ADJUST FOR OPTIMUM BRAKING CHARACTERISTICS. CONSULT MAINTENANCE MANUAL FOR DETAILS.

FIRST USED ON OPTION/MODEL	QTY.	DESCRIPTION	PART NO.	ITEM NO.
TU56				
PARTS LIST				
UNLESS OTHERWISE SPECIFIED	DRN.	DATE	EQUIPMENT CORPORATION	
UNLESS OTHERWISE SPECIFIED	CHK'D.	DATE	WATNARD, MASSACHUSETTS	
DIMENSION IN INCHES	ENG.	DATE	TITLE	
TOLERANCES	PROJ. ENG.	DATE	TRANSPORT LOGIC	
DECIMALS FRACTIONS ANGLES	PROD.	DATE	DIAGRAM	
± .005 ± .1/64 ± 0°30'			SIZE CODE	
FINAL SURFACE QUALITY			NUMBER	
REMOVE BURRS AND BREAK SHARP CORNERS			TU56-0-TLD	
MATERIAL			REV.	
+			L	
NEXT HIGHER ASSY			SCALE	
A-ML-TU56-0			1 OF 2	
FINISH			SHEET	
+			DIST.	

Drawing and specifications, herein, are the property of Digital Equipment Corporation and shall not be reproduced or copied in whole or in part as the basis for the manufacture or sale of items without written permission.

**NOTES:**  
 1. \* G888 READ/WRITE AMPLIFIERS ARE OFFERED AS A CUSTOMER OPTION FOR SPECIAL APPLICATIONS NOT REQUIRING A DECTAPE CONTROL. THE W032 CABLE MUST BE REPLACED WITH A M923 CABLE AS PART OF THIS OPTION. ATU56 INCLUDING THIS OPTION IS DESIGNATED ATU56M, AND ATU56H INCLUDING THIS OPTION IS DESIGNATED ATU56HM.  
 2. \*\*\* W513 LEVEL AMPLIFIERS ARE REQUIRED WHEN THE TU56 IS CONNECTED TO A RELAY DRIVER TYPE CONTROL. THE W513 MODULES ARE REPLACED BY M941 JUMPER MODULES WHEN THE TU56 IS CONNECTED TO ANY OTHER DECTAPE CONTROL.



LEFT HAND TRANSPORT      RIGHT HAND TRANSPORT

CONT.  
 3. \*\*\* G742 JUMPER CARD REPLACES M531 WHEN TU56 IS USED WITH POS OUTPUT LOGIC CONT.

FIRST USED ON OPTION/MODEL	QTY.	DESCRIPTION	PART NO.	ITEM NO.
TU56				
PARTS LIST				
UNLESS OTHERWISE SPECIFIED				
DIMENSION IN INCHES				
TOLERANCES				
DECIMALS	FRACTIONS	ANGLES		
= .005	= 1/64	= 0°30'		
FINAL SURFACE QUALITY				
REMOVE BURRS AND BREAK SHARP CORNERS				
MATERIAL				
FINISH				
NEXT HIGHER ASSY				
A-ML-TU56-0				
SCALE				
SHEET	2 OF 2			

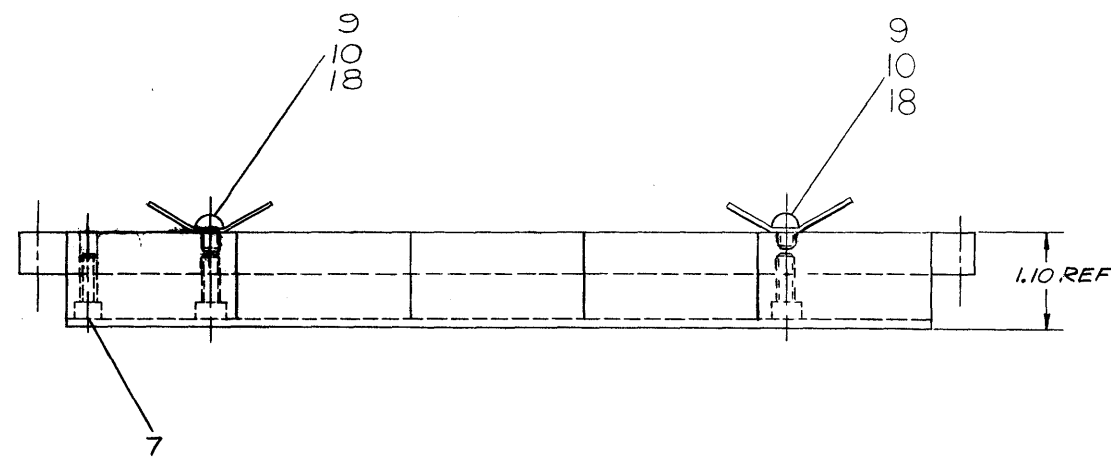
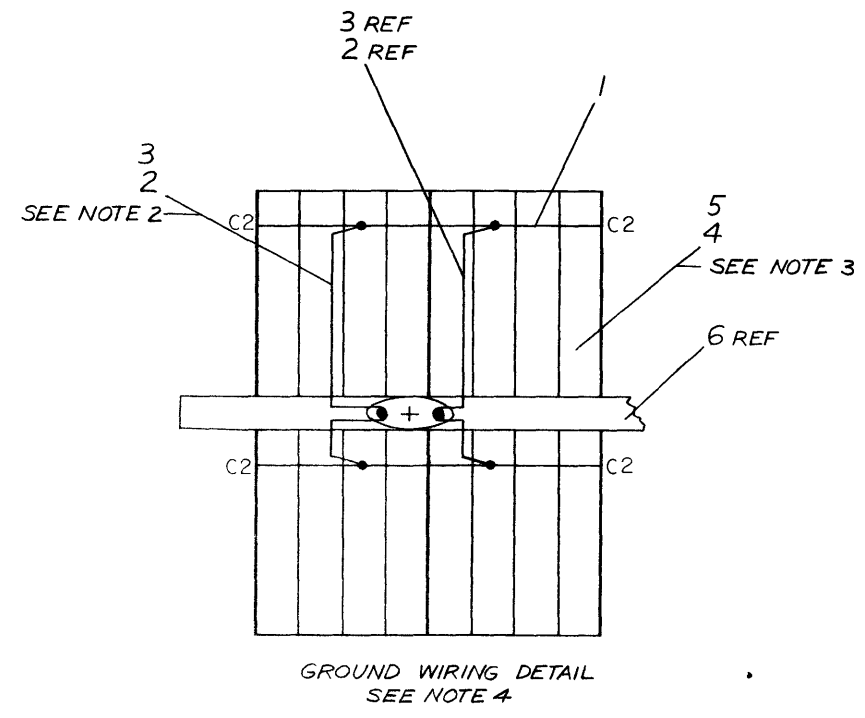
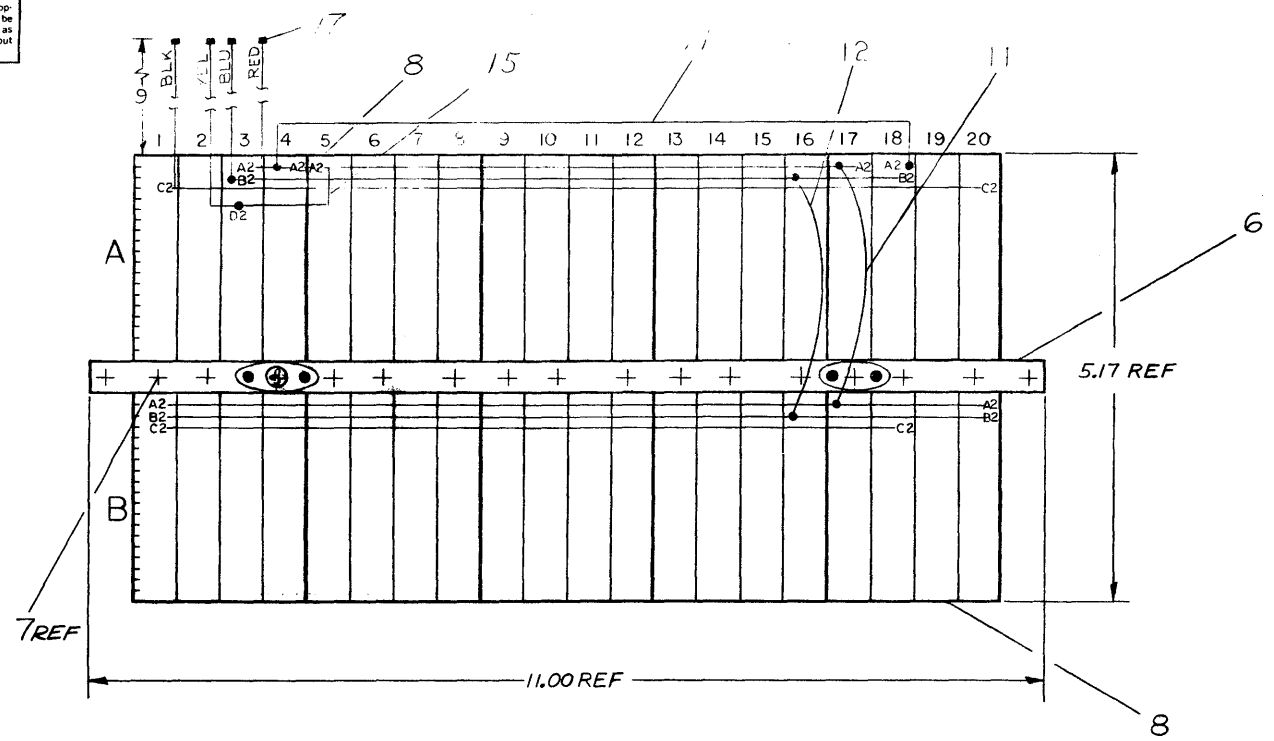
REV.	
CHANGE NO.	
CHK	

This drawing and specifications, herein, are the property of Digital Equipment Corporation and shall not be reproduced or copied or used in whole or in part as the basis for the manufacture or sale of items without written permission.

REV E 7006321-0-0

ITEM NO.	COMP	POL	FROM	TO	POL
13	RESISTOR		A08S2	A06P1	
13	RESISTOR		A08N2	A07P1	
14	CAPACITOR	-	B08F1	A08L2	+
14	CAPACITOR	-	B08R1	B08S2	+

- NOTES:
- CONNECTIONS ON ITEMS #1 & #2 TO BE SOLDERED AND LOCATED AT MINIMUM PRACTICAL HEIGHT ABOVE BLOCK
  - CONN BLOCK TO BE GROUNDED TO GND LUG AS SHOWN
  - USE YELLOW WIRE (ITEM #3) FOR MACHINE WRAPPED & BLUE WIRE (ITEM #4) FOR HAND WRAPPED WIRING
  - JUMPER GROUND BUSSING AS SHOWN 1 PLACE



REV	CHG	NO	DATE	BY	DESCRIPTION
A		1			TU56-00005
B		2	1/19/70	E. LUTTIG	TU56-00013
C		3	2-27-70	E. LUTTIG	TU56-00017
D		4	3/19/70	E. LUTTIG	TU56-00055
E		5	3/19/71	E. LUTTIG	TU56-00062
		6	9/21/71	E. LUTTIG	TU56-00071

FIRST USED ON OPTION/MODEL TU56	DO NOT SCALE DRAWING UNLESS OTHERWISE SPECIFIED DIMENSION IN INCHES
TOLERANCES DECIMALS .XXX = ± .005 .XX = ± .02 .X = ± .1	TOLERANCES DECIMALS ± .005 ANGLES ± 0°30' FINAL SURFACE QUALITY REMOVE BURRS AND BREAK SHARP CORNERS
MATERIAL + +	FINISH + +

QTY.	DESCRIPTION	PART NO.	ITEM NO.
	PARTS LIST		
	digital EQUIPMENT CORPORATION MAYNARD, MASSACHUSETTS		
	TITLE WIRED ASSY TU56		
	NEXT HIGHER ASSY E-UA-TU56-0-0	SCALE 1/1	REV E
	SHEET 1 OF 1	SIZE CODE D AD	NUMBER 7006321-0-0
		DIST.	

REV E  
NUMBER  
7006321-0-0  
SIZE CODE  
D AD

**DIGITAL EQUIPMENT CORPORATION**  
MAYNARD, MASSACHUSETTS  
**PARTS LIST**

MADE BY KEN GULICK	CHECKED D. HEALY	SECTION
DATE 6/19/69	DATE 7/23/69	1
ENG <i>E. Healy</i>	PROD <i>C. Thompson</i>	ISSUED SECT.
DATE 7/26/69	DATE 8/26/69	1

QUANTITY / VARIATION

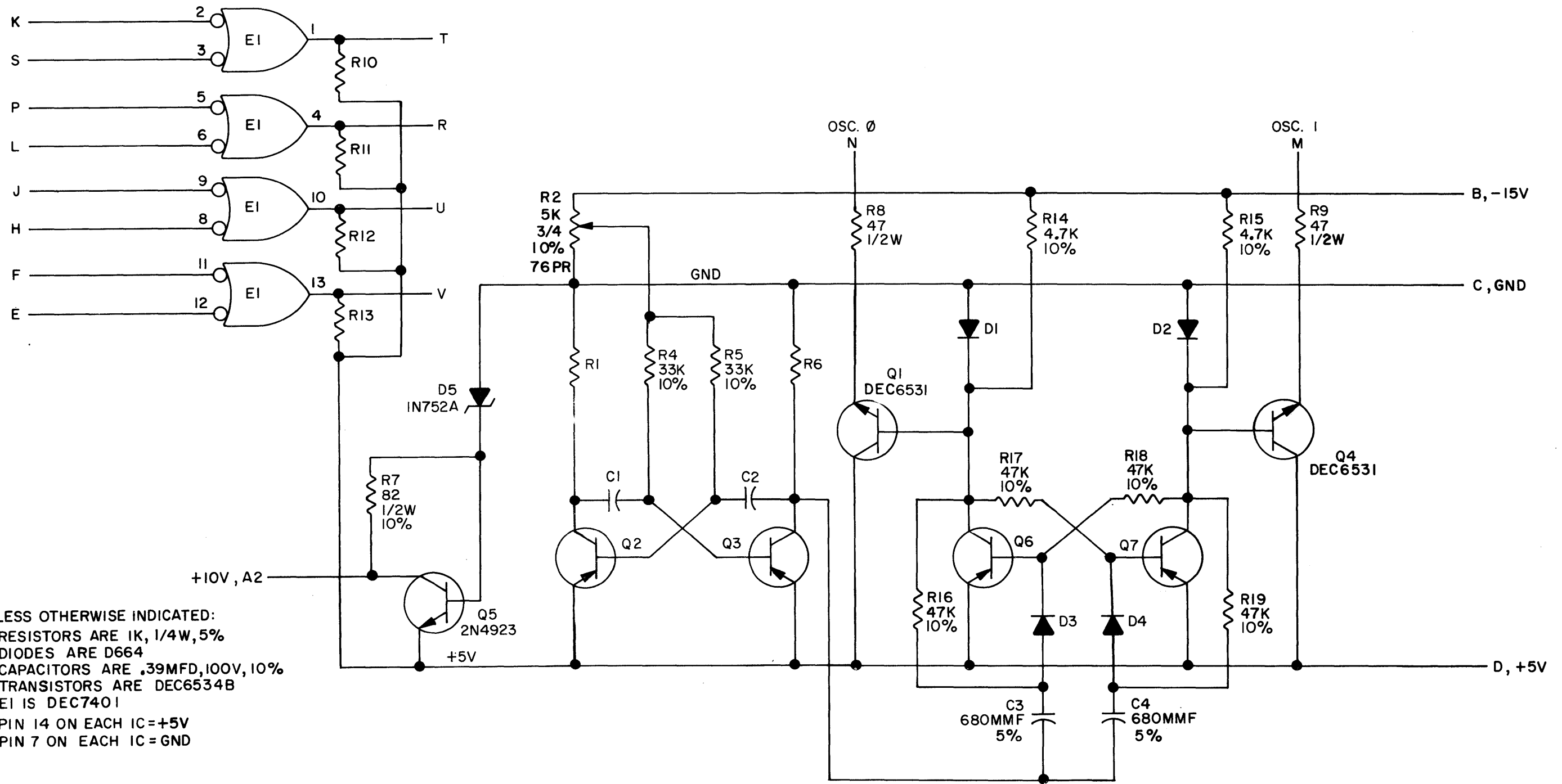
ITEM NO.	DWG NO. / PART NO.	DESCRIPTION	7006321-0															
1	1205541	BUS STRIP	A/R															
2	9107560-01	22 AWG BUS WIRE	A/R															
3	9107265-09	#22 TUBING, TEFLON, WHITE	A/R															
4	9105740-44	30 AWG SOLID TEF INS. WIRE, YELLOW	A/R															
5	9105740-66	30 AWG SOLID TEF INS. WIRE, BLUE	A/R															
6	6-IA-7407393-0-0	MTG BAR (5 BLOCKS) TU56	1															
7	9006120	SCR PHL HD SELF-TAPPING 8-32 x 5/8	10															
8	1205348	288 PIN CONN BLOCK	5															
9	9006775	TERMINAL #2116-08-00 SHAKEPROOF	2															
10	9008143	SCR PHL HD SELF-TAPPING 8-32 x 1/4	2															
11	9107350-22	22 AWG STRD TEF INS WIRE, RED	A/R															
12	9107530-66	22 AWG STRD TEF INS WIRE, BLU	A/R															
13	7408016	RESISTOR 100 OHMS 1/4 W 5% CCW/TERMI PTS	2															
14	7408015	CAPACITOR 22 MFD 35V S. TANT W/TERMI PTS	2															
REF	K-WL-TU56-0-2	WIRE LIST	X															
15	9107350-44	22 AWG STRD TEF INS WIRE, YEL	A/R															
16	9107350-00	22 AWG STRD TEF INS WIRE, BLK	A/R															
17	9007917	CONN. SOLDERLESS #50902 ARKLES	4															
18	9006634	WASHER INT #8	2															

TITLE	ASSY NO.	SIZE	CODE	NUMBER	REV	ECO NO.
WIRED ASSY TU56	D-AD-7006321-0-0	A	PL	7006321-0-0	E	TU56-00062
SHEET 1 OF 1	DIST.					

DIGITAL EQUIPMENT CORPORATION MAYNARD, MASSACHUSETTS			LEGEND		QUANTITY / VARIATION							
ACCESSORY LIST			D	DOCUMENT	TU56-0, -M, -MR							
MADE BY J. Ingledue		CHECKED 7/7/72	SECTION	DN	DOCUMENT CHANGE NOTICE	TU56-H, MH, MJ						
DATE 5/31/72		DATE <i>7/7/72</i>		PA	PAPER TAPE ASCII	TU56-C, -MC						
ENG <i>H. Dink</i>		PROD	ISSUED SECT.	PB	PAPER TAPE BINARY	TU 56-HC, -MD						
DATE 7/7/72		DATE		PM	PAPER TAPE READ-IN-MODE							
ITEM NO.	DWG NO. / PART NO.	DESCRIPTION								KIT CHECK	BY	DATE
1	BC02X-03	Select Cable				1	1	∅	∅			
2	74-8321	Mounting Bracket (H950 Cabinet)				1	1	1	1			
3	74-8322	Spacer Block (H950 Cabinet)				2	2	2	2			
4	TU56-0	Complete Print Set (see A-ML-TU56-0)				1	1	1	1			
5	DEC-00-HRTB-D	Maintenance Manual				1	1	∅	∅			
6	12-9331	Take Up Reel				2	1	2	1			
7	TUC-01	Head Cleaning Kit				1	1	∅	∅			
8	74-5152-1	Head Cable				1	1	∅	∅			
9	G742	Jumper Module (Remove M531 and replace with G742 for PDP-11 add-ons and OEM's)				1	1	1	1			
10	74-5996	Certified DECTape 12 Bit Format				2	1*	∅	∅			
11	74-5996-1	Certified DECTape 18 Bit Format				2	1*	∅	∅			
		NOTE: Items 12 thru 14 are for Rack Mountable Field Add-on shipments only.										
12	91-7673-06	AC Line Cord 6'				1	1	∅	∅			
13	90-8851	Mounting Hardware Bag				1	1	1	1			
14	91-7710 and 90-8849	Hook Up Wire				1	1	∅	∅			
		*NOTE: Supply Item 10 for PDP-5, 8 Family, and 12; Item 11 for PDP-1,4,6,7,9,10,11, and 15.										
		NOTE: When unit is to be connected to a TU55 or a relay driver control, refer to D-MU-TU56-0 for notes.										
		When unit is to be installed on a tubular style cabinet, refer to A-PL-TU56-0-0 for notes.										
15	DEC-TU56-IPB-1	ILLUSTRATED PARTS BREAKDOWN				1	1	1	1			

TITLE DECTape DRIVE UNIT ACCESSORY SHIPPING KIT		ASSY. NO.	SIZE CODE <b>A AL</b>	NUMBER TU56-0-5	REV. E	ECO NO TU56-00077
SHEET 1 OF 1		DIST.				

THIS SCHEMATIC IS FURNISHED ONLY FOR TEST AND MAINTENANCE PURPOSES. THE CIRCUITS ARE PROPRIETARY IN NATURE AND SHOULD BE TREATED ACCORDINGLY. COPYRIGHT 1969 BY DIGITAL EQUIPMENT CORPORATION



UNLESS OTHERWISE INDICATED:  
 RESISTORS ARE 1K, 1/4W, 5%  
 DIODES ARE D664  
 CAPACITORS ARE .39MFD, 100V, 10%  
 TRANSISTORS ARE DEC6534B  
 E1 IS DEC7401  
 PIN 14 ON EACH IC = +5V  
 PIN 7 ON EACH IC = GND

REVISIONS	CHK	CHG NO.	REV.
		00001	A
		00002	B
		00003	C

DRN. <i>BUTLER</i>	DATE 11-13-69
CHK'D <i>V. Smith</i>	DATE 11-17-69
ENG. <i>E. Lutting</i>	DATE 1/24/69
PROD.	DATE

TRANSISTOR & DIODE CONVERSION CHART	
DEC	EIA
D664	IN3606
DEC6534B	MPS6534B
DEC6531	MPS6531
2N4923	SAME

**digital**  
 EQUIPMENT CORPORATION  
 MAYNARD, MASSACHUSETTS

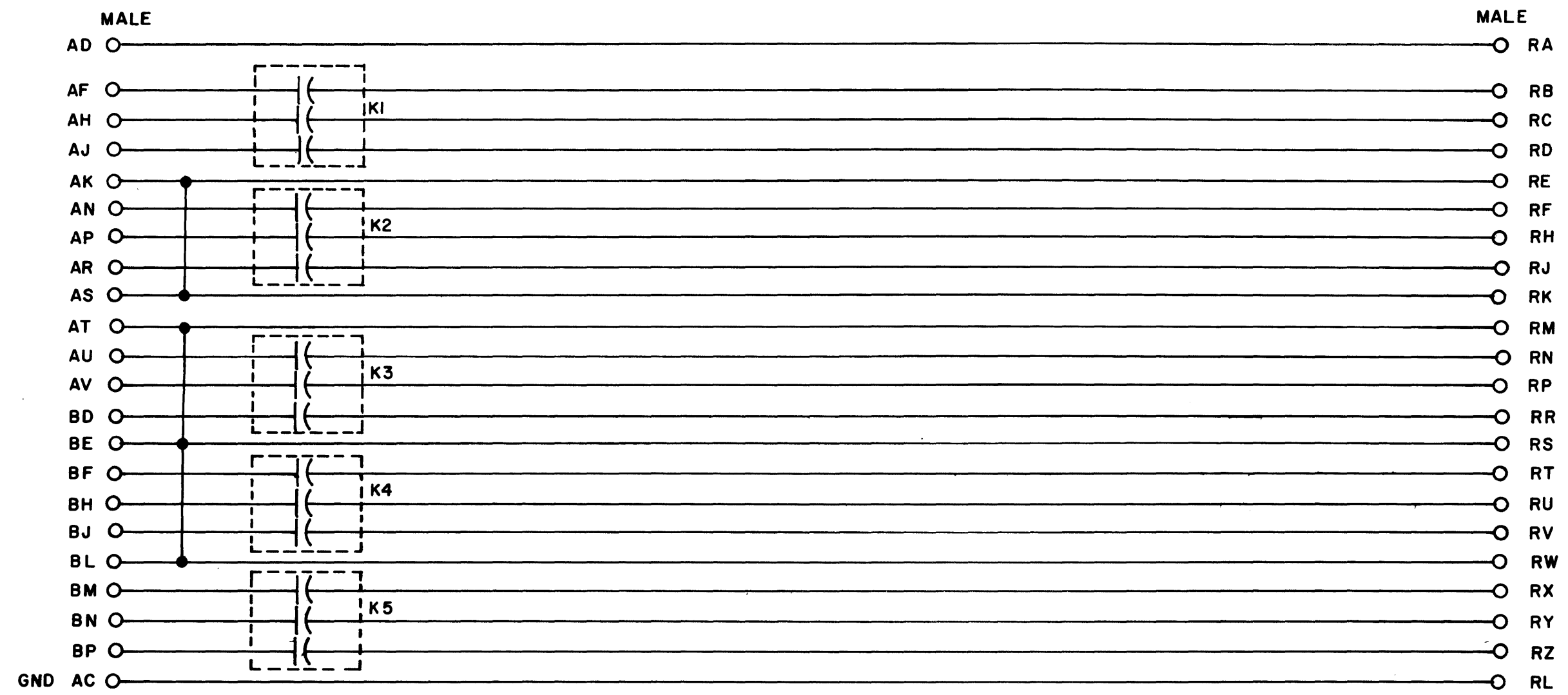
TITLE CLOCK & REGULATOR G859			
SIZE B	CODE CS	NUMBER G859-0-1	REV. C
PRINTED CIRCUIT REV.			A





REV. B	NUMBER 6851-0-1	CS	B
		CODE	SIZE

THIS SCHEMATIC IS FURNISHED ONLY FOR TEST AND MAINTENANCE PURPOSES. THE CIRCUITS ARE PROPRIETARY IN NATURE AND SHOULD BE TREATED ACCORDINGLY. COPYRIGHT 1965 BY DIGITAL EQUIPMENT CORPORATION



AMPHENOL  
133-022-03

NOTE:  
RELAYS ARE WHEELOCK  
REED, 260 SERIES 3A  
12V DC

-15V AB



REVISIONS	CHK	CHG NO.	REV.
	DAW	4613	1
		REV & REDR.	
		5196	B

DRN. H.W. PORTER	DATE 1-13-65
CHK'D N. PERRYMAN	DATE 1-25-65
ENG. D. WARDIMAN	DATE 1-25-65
PROD.	DATE

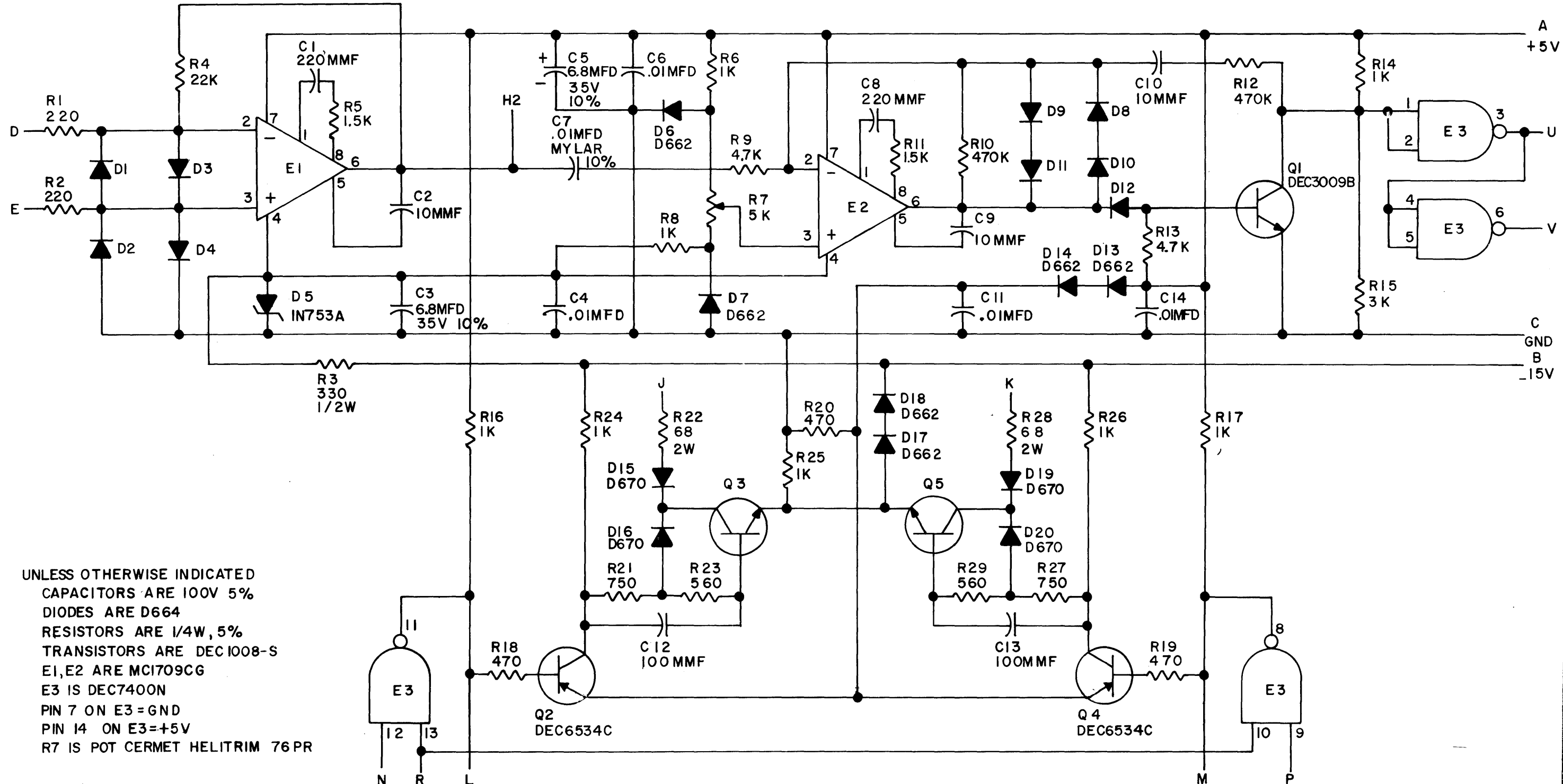
TRANSISTOR & DIODE CONVERSION CHART			
DEC	EIA	DEC	EIA

**digital**  
EQUIPMENT  
CORPORATION  
MAYNARD, MASSACHUSETTS

TITLE RELAY G851			
SIZE B	CODE CS	NUMBER G851-0-1	REV. B
PRINTED CIRCUIT REV.			B



THIS SCHEMATIC IS FURNISHED ONLY FOR TEST AND MAINTENANCE PURPOSES. THE CIRCUITS ARE PROPRIETARY IN NATURE AND SHOULD BE TREATED ACCORDINGLY. COPYRIGHT 1969 BY DIGITAL EQUIPMENT CORPORATION



UNLESS OTHERWISE INDICATED  
 CAPACITORS ARE 100V 5%  
 DIODES ARE D664  
 RESISTORS ARE 1/4W, 5%  
 TRANSISTORS ARE DEC1008-S  
 E1, E2 ARE MC1709CG  
 E3 IS DEC7400N  
 PIN 7 ON E3 = GND  
 PIN 14 ON E3 = +5V  
 R7 IS POT CERMET HELITRIM 76 PR

REVISIONS	CHK	CHG	NO.	REV.
			6888	A
			10002	B

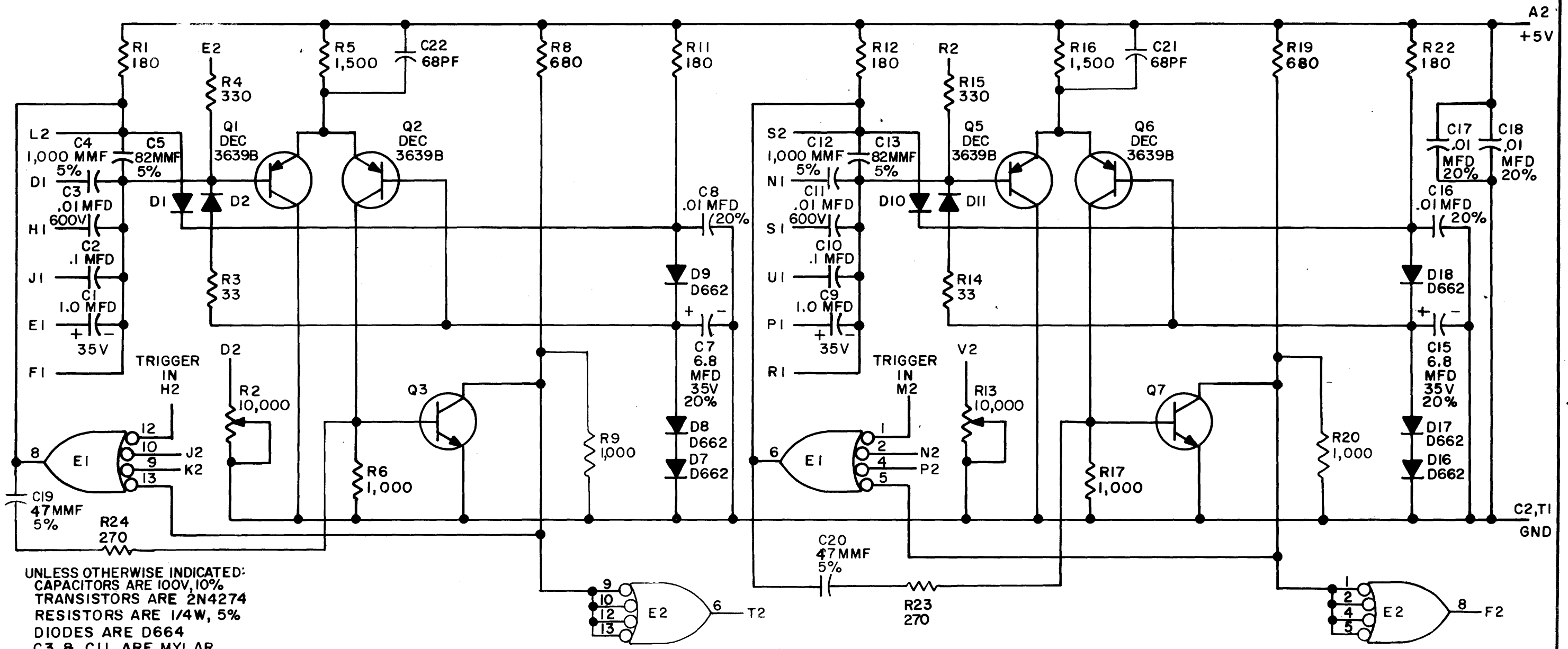
DRN.	DATE
<i>A. Clemens</i>	8-29-69
CHK'D.	DATE
<i>V.D. Hallett</i>	9/3/69
ENG.	DATE
<i>J. Calver</i>	9/25/69
PROD.	DATE

TRANSISTOR & DIODE CONVERSION CHART			
DEC		EIA	
D664	IN3606	DEC1008-S	MM1008
D662	IN645		
D670	SAME		
DEC3009B	2N3009B		
DEC6534C	MPS6534		

**digital**  
 EQUIPMENT CORPORATION  
 MAYNARD, MASSACHUSETTS

TITLE			
MANCHESTER READER/WRIER G888			
SIZE	CODE	NUMBER	REV.
B	CS	G888-0-1	B
PRINTED CIRCUIT REV.			
A			

THIS SCHEMATIC IS FURNISHED ONLY FOR TEST AND MAINTENANCE PURPOSES. THE CIRCUITS ARE PROPRIETARY IN NATURE AND SHOULD BE TREATED ACCORDINGLY. COPYRIGHT 1967 BY DIGITAL EQUIPMENT CORPORATION



UNLESS OTHERWISE INDICATED:  
 CAPACITORS ARE 100V, 10%  
 TRANSISTORS ARE 2N4274  
 RESISTORS ARE 1/4W, 5%  
 DIODES ARE D664  
 C3 & C11 ARE MYLAR  
 E1 IS DEC74H40N  
 PIN 7 ONIC'S= GND  
 PIN 14 ONIC'S= +5V  
 R2 & R13 ARE HELITRIM POT #78PR  
 1.0MFD CAPACITORS ARE TANTALUM  
 E2 IS DEC7413N

PARTS LIST A-PL-M302-0-0

REV	CHG NO	REV	B	C	D	E	F	H	J	K	L
6507	6719	6881	7077	00001	00002	00003	00004				

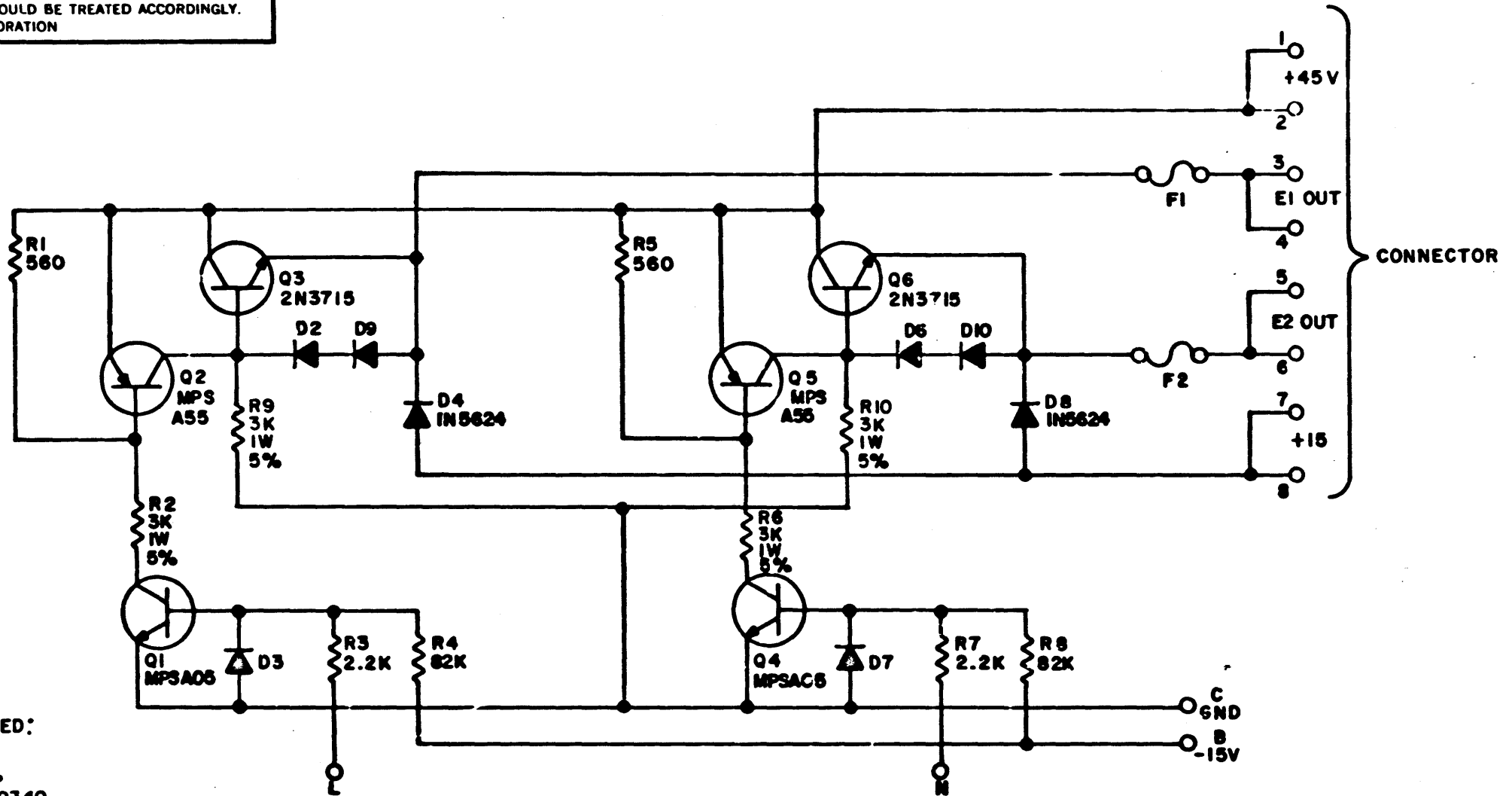
DRN. <i>M. Waller</i>	DATE 6-15-67
CHK'D <i>[Signature]</i>	DATE 6/21/67
ENG. <i>L. White</i>	DATE 6/21/67
PROD. 1	DATE

TRANSISTOR & DIODE CONVERSION CHART			
DEC	EIA	DEC	EIA
2N4274	SAME		
DEC3639B	2N3639		
D662	IN645		
D664	IN3606		



**digital**  
 EQUIPMENT CORPORATION  
 MAYNARD, MASSACHUSETTS

TITLE ONE SHOT DELAY M302			
SIZE B	CODE CS	NUMBER M302-0-1	REV. L
PRINTED CIRCUIT REV. L			

THIS SCHEMATIC IS FURNISHED ONLY FOR TEST AND MAINTENANCE PURPOSES. THE CIRCUITS ARE PROPRIETARY IN NATURE AND SHOULD BE TREATED ACCORDINGLY. COPYRIGHT 1969 BY DIGITAL EQUIPMENT CORPORATION



UNLESS OTHERWISE INDICATED:  
 DIODES ARE D672  
 RESISTORS ARE 1/4W, 10%  
 CONNECTOR IS DEC #1209340  
 CONNECTOR PINS ARE DEC #1209456  
 F1, F2 ARE 5 AMP  
 NOTE: Q1, Q2, Q4, Q5 HAVE VARIED PACKAGES  
 DEPENDING ON SOURCE.

SEE DIAGRAM:  
 MOTOROLA: MPSA05  
 MPSA55  
 BOTTOM VIEW  GE: GPSA05  
 GPSA55

REVISIONS	CHK	CY	NO	REV
	00002	A		
	00003	B		
	00004	C		
	00005	D		

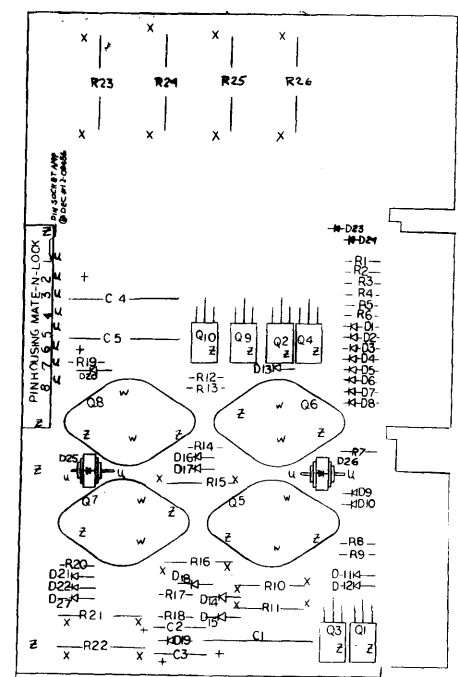
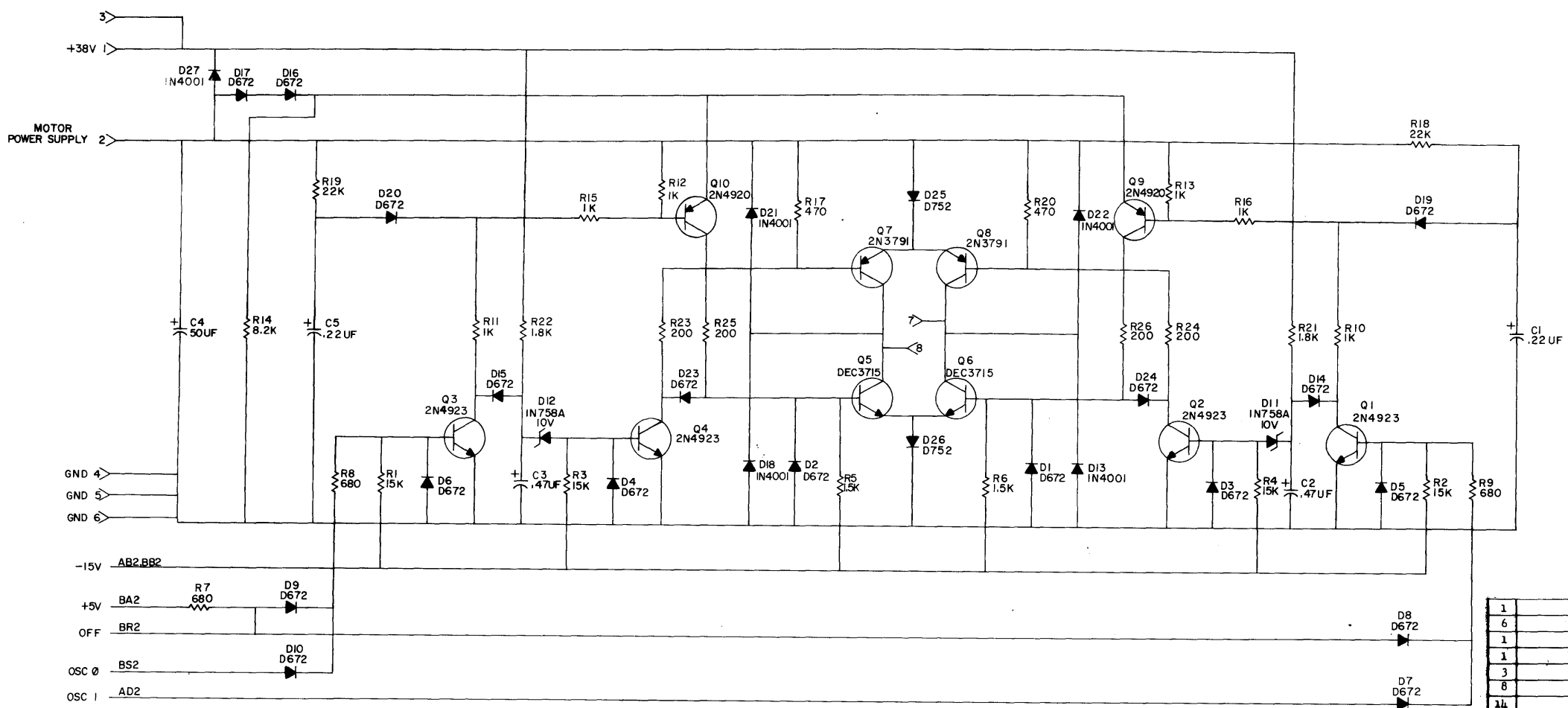
DRN.	DATE
<i>R. Blum</i>	9-9-69
CHK'D	
ENG.	
PROD.	

TRANSISTOR & DIODE CONVERSION CHART			
DEC		EIA	
D72	IN3653		
715	NONE		
715	NONE		
715	NONE		

**EQUIPMENT CORPORATION**  
 MAYNARD, MASSACHUSETTS

TITLE			
DUAL MOTOR VOLTAGE CONTROL G847			
SIZE	CODE	NUMBER	REV
B	CS	G847-0-1	D
PRINTED CIRCUIT REV.			E

THIS SCHEMATIC IS FURNISHED ONLY FOR TEST AND MAINTENANCE PURPOSES. THE CIRCUITS ARE PROPRIETARY IN NATURE AND SHOULD BE TREATED ACCORDINGLY. COPYRIGHT 1971 BY DIGITAL EQUIPMENT CORPORATION

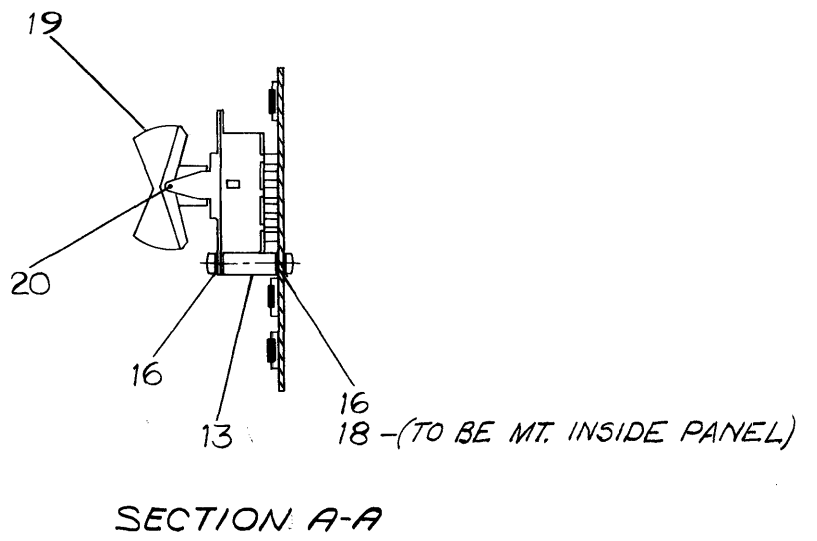
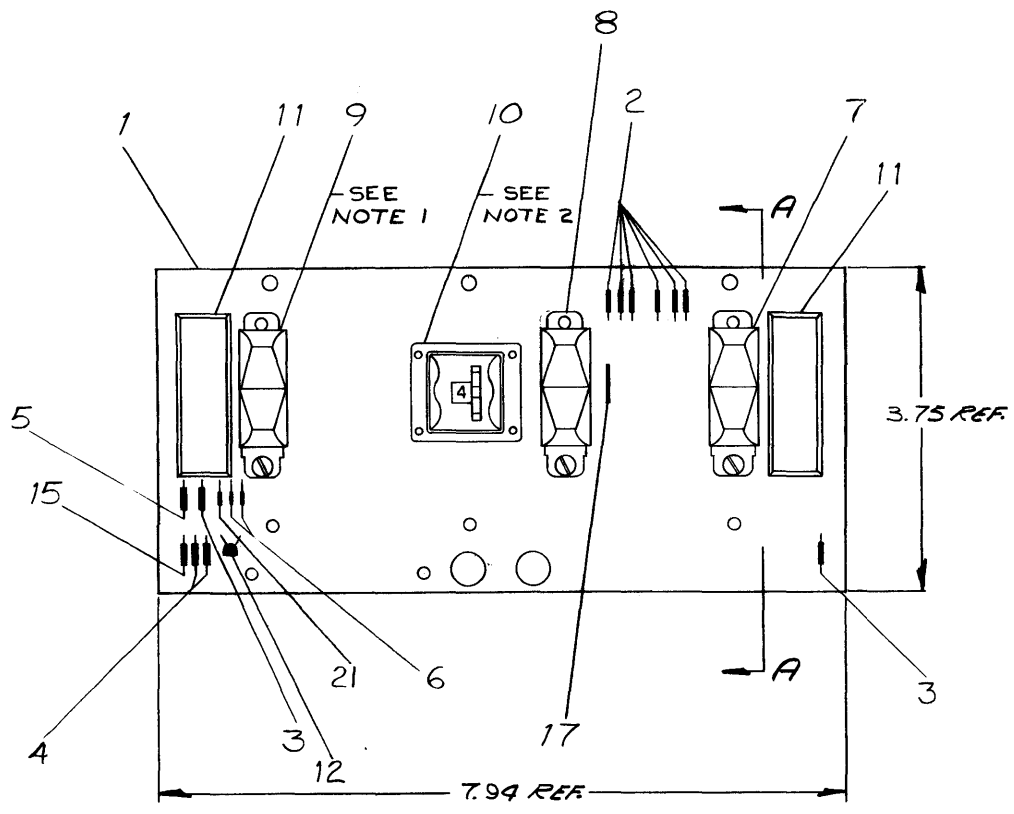


1		FIBER SPACER 1/8 x 1/8 x #6	9007615	35
6		4-40 HEXNUT	9004556	2
1		NYLON HEXNUT #4	9007992	2
1		NYLON SCREW 4-40 x 1/2	9004602-4	1
3		HANDLE EYELET	9006732	1
8		4-40 BRPNT	9006557	1
14		4-40 x 5/16" SCREW	9006010-4	2
1		HANDLE, FLIP CHIP - GREEN	9008337-01	2
2	Q9, 10	TRANSISTOR 2N4920	1509605	2
4	Q1, 2, 4, 3	TRANSISTOR 2N4923	1509604	2
2	Q7, 8	TRANSISTOR 2N3791	1509581	2
2	Q5, 6	TRANSISTOR DEC 3715	1503068	2
2	R18, 19	RES. 22K 1/4W 5%	1301808	2
4	R23, 24, 25, 26	RES. 200 5W 5%	1309639	22
4	R1, 2, 3, 4	RES. 15K 1/4W 5%	1300496	21
1	R14	RES. 8.2K 1/4W 5%	1303179	20
2	R21, 22	RES. 1.8K 2W 10%	1300402	19
2	R5, 6	RES. 1.5K 1/4W 5%	1300391	18
4	R10, 11, 15, 16	RES. 1K 1W 5%	1300368	17
2	R12, 13	RES. 1K 1/4W 5%	1300365	16
3	R7, 8, 9	RES. 680 1/4W 5%	1301424	15
2	R17, 20	RES. 470 1/4W 5%	1300316	14
8		PIN, SOCKET	1209456	13
1		PIN HOUSING	1209340	12
2	D11, 12	DIODE ZENER 1N758A 10V, .4W 5%	1100125	11
2	D25, 26	DIODE D752	1110615	10
18	D1-10, 14-17, 19, 20, 23, 24	DIODE D672	1102975	9
5	D13, 18, 21, 22, 27	DIODE 1N4001	1102942	8
2	C1, 5	CAP. 0.22UF 100V 10% MYLAR	1000037	7
2	C2, 3	CAP. 0.47UF 35V 10% S.TANT	1005965	6
1	C4	CAP. 50UF 50V -10+75% S.TANT	1000080	5
1		ETCHED CIRCUIT BOARD	5008522	4
		MODULE ECO HISTORY	B-MH-0848-0-6	3
		ETCH BOARD, MOTOR CCNT	EIA-500832-0-0	2
		X-Y COORDINATE HOLE LOCATION	K-CO-0848-0-4	1
QTY.	REF. DESIGNATION	DESCRIPTION	DEC PART NO.	REV.
		PARTS LIST		

REVISIONS		TRANSISTOR & DIODE CONVERSION CHART				TITLE	
CHKD	DATE	DEC	EIA	DEC	EIA	SIZE	CODE
A. RITCEY	12-2-69	2N4920	SAME	D672	1N3653	D	CS
R. TREMBLAY	12-4-69	2N4923	SAME	D725	IN3653		
E. LUTTIG	4-3-70	2N3791	SAME	1N758A 10V	SAME		
		DEC3715	2N3715	1N4001	SAME		

This drawing and specifications, herein, are the property of Digital Equipment Corporation and shall not be reproduced or copied or used in whole or in part as the basis for the manufacture or sale of items without written permission.

- NOTES:
1. HAND DEGREASE ONLY- DO NOT VAPOR DEGREASE AS IT WILL CAUSE MALFUNCTION IN SWITCHES
  2. IN SOLDERING OPERATIONS DO NOT ALLOW FLUX OR CLEANING AGENT TO ENTER SWITCH



REV	CHG	NO.	DATE	BY
B	002	TU56-00020	4/3/70	H. DRAB
C	001	TU56-00001	4/3/70	H. DRAB
D	003	TU56-00003	5/21/73	H. DRAB

FIRST USED ON OPTION/MODEL  
TU56

DO NOT SCALE DRAWING

UNLESS OTHERWISE SPECIFIED DIMENSION IN INCHES

TOLERANCES

DECIMALS	FRACTIONS	ANGLES
±.000	1/64	± 0°30'

FINAL SURFACE QUALITY  
REMOVE BURRS AND BREAK SHARP CORNERS

MATERIAL

FINISH

QTY.	DESCRIPTION	PART NO.	ITEM NO.
PARTS LIST			
DRN. <i>Rocconi</i> DATE 8-11-69		TITLE	
CHK'D. <i>Ngaly</i> DATE 8/19/69		digital EQUIPMENT CORPORATION MAYNARD, MASSACHUSETTS	
ENG. <i>C. J. Leahy</i> DATE 3/3/70			
PROJ. ENG. <i>C. J. Leahy</i> DATE 3/3/70		SWITCH CONTROL PANEL (TU56)	
MATERIAL			
NEXT HIGHER ASSY		SIZE CODE	
D-7A-7006222-0-0		NUMBER	
SCALE		REV	
SHEET 1 OF 1		D	
DIST. G		D	

DIGITAL EQUIPMENT CORPORATION

MAYNARD, MASSACHUSETTS

PARTS LIST

MADE BY *Paul F. Sweeney*  
DATE *Oct 28, 1969*  
ENG *E. Sullivan*  
DATE *3-18-70*

CHECKED *D. Wall*  
DATE *1-30-70*  
PROD *P. Sweeney*  
DATE *3/25/70*

SECTION *PC LAYOUT*  
ISSUED SECT.

QTY/VAR

ITEM NO.	DWG NO. / PART NO. CL BASIC VAR.	DESCRIPTION	QTY/VAR		
			UNIT COST	UNIT QUANTITY	QUANTITY ISSUED
REF	C-CS-5408500-0-1	CIRCUIT SCHEMATIC			
REF	K-CO-5408500-0-4	X-Y COORDINATE HOLE LOCATION			
REF	D-AH-5408500-0-5	ASSY/DRILLING HOLE# LAYOUT			
1	5008499	ETCHED CKT. BD. TU56		1	
2	1300386	RES. 1.2K, 1/4W, 10% C.C.		6	
3	1301421	RES. 15, 1/4W, 10%		2	
4	1300490	RES. 12K, 1/4W, 10%		2	
5	1302388	RES. 2K, 1/4W, 5%		1	
6	1100114	DIODE D664		2	
7	1209614	SWITCH 3 POS. RS-38-FB PC		1	
8	1209613	SWITCH 3 POS. RS-39-FB PC		1	
9	1209612	SWITCH MINI RS-33-FB PC		1	
10	1209617	SWITCH 8 POS THUMBWHEEL SWITCH		1	
11	1209637	LIGHT		2	
12	1509338	TRANSISTOR, MPS 6531		1	
13	9008833	SPACER, 3/16 AF x 5/8 LG #4-40 AL		3	
<del>14</del>	<del>9006020</del>	<del>SCREW, 6-32 x 1/4</del>		<del>6</del>	
15	1300432	RES. 3K, 1/4W, 5%		1	
16	9006009-4	SCR SLOTTED HD #4-40 x 1/4 LG SST		6	
17	9107560-01	#22 AWG BUS WIRE		1	

TITLE TU56 CONTROL BOARD	ASSY NO. D-AD-5408500-0-0	SIZE CODE <b>A PL</b>	NUMBER 5408500-0-0	REV. D	ECO NO. 00003
SHEET 1 OF 2		DIST. <i>334 434 435</i>			

DIGITAL EQUIPMENT CORPORATION

MAYNARD, MASSACHUSETTS

PARTS LIST

MADE BY *Paul F. Sweeney*  
DATE *Oct. 28, 1969*  
ENG *E. Sullivan*  
DATE *3-18-70*

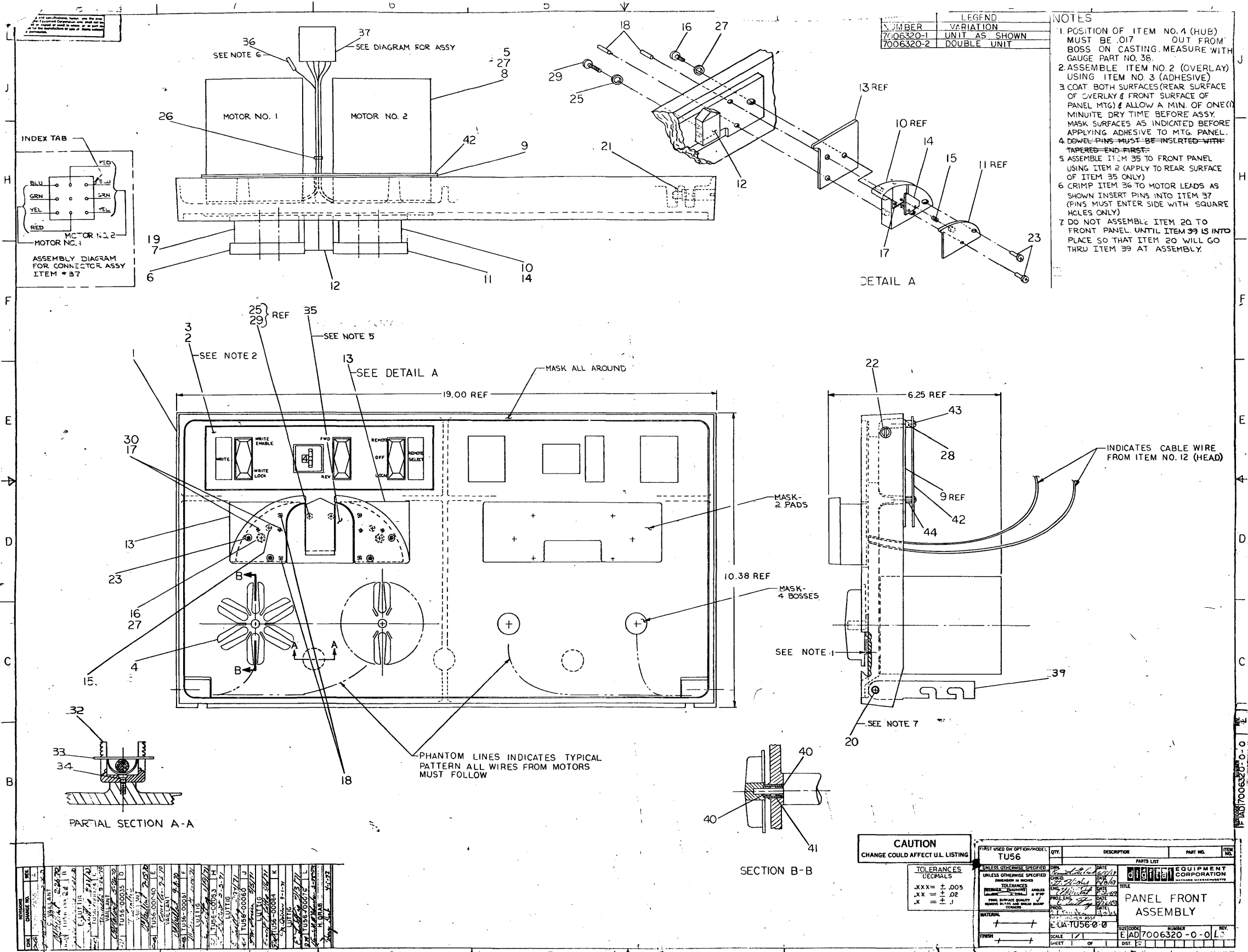
CHECKED *D. Wall*  
DATE *1-30-70*  
PROD *P. Sweeney*  
DATE *3/25/70*

SECTION  
ISSUED SECT.

QTY/VAR

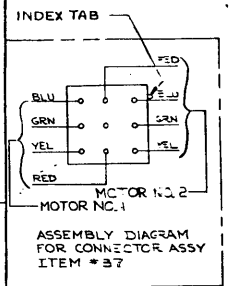
ITEM NO.	DWG NO. / PART NO. CL BASIC VAR.	DESCRIPTION	QTY/VAR		
			UNIT COST	UNIT QUANTITY	QUANTITY ISSUED
18	9006632	WASHER INT TOOTH #4		3	
19	1209711-01	BUTTON, ROCKER		3	
20	9008842	DOWEL PIN		3	
21	1100121	DIODE IN748 3.9V 10% 40mw		1	

TITLE SWITCH CONTROL PANEL (TU56)	ASSY NO. D-AD-5408500-0-0	SIZE CODE <b>A PL</b>	NUMBER 5408500-0-0	REV. D	ECO NO. 00003
SHEET 2 OF 2		DIST.			



NUMBER	VARIATION
7006320-1	UNIT AS SHOWN
7006320-2	DOUBLE UNIT

- NOTES**
1. POSITION OF ITEM NO. 4 (HUB) MUST BE .017 OUT FROM BOSS ON CASTING. MEASURE WITH GAUGE PART NO. 38.
  2. ASSEMBLE ITEM NO. 2 (OVERLAY) USING ITEM NO. 3 (ADHESIVE)
  3. COAT BOTH SURFACES (REAR SURFACE OF OVERLAY & FRONT SURFACE OF PANEL MTG) & ALLOW A MIN. OF ONE (1) MINUTE DRY TIME BEFORE ASSY. MASK SURFACES AS INDICATED BEFORE APPLYING ADHESIVE TO MTG. PANEL.
  4. DOWEL PINS MUST BE INSERTED WITH TAPERED END FIRST.
  5. ASSEMBLE ITEM 35 TO FRONT PANEL USING ITEM 2 (APPLY TO REAR SURFACE OF ITEM 35 ONLY)
  6. CRIMP ITEM 36 TO MOTOR LEADS AS SHOWN INSERT PINS INTO ITEM 37 (PINS MUST ENTER SIDE WITH SQUARE HOLES ONLY)
  7. DO NOT ASSEMBLE ITEM 20 TO FRONT PANEL UNTIL ITEM 39 IS IN PLACE SO THAT ITEM 20 WILL GO THRU ITEM 39 AT ASSEMBLY.



**CAUTION**  
CHANGE COULD AFFECT U.L. LISTING

TOLERANCES	DECIMALS
.XXX	± .005
.XX	± .02
.X	± .1

REV.	DATE	DESCRIPTION	PART NO.	ITEM NO.
1				

**UNLESS OTHERWISE SPECIFIED**  
DIMENSIONS IN INCHES

**digital CORPORATION**

**PANEL FRONT ASSEMBLY**

SCALE: 1/1

SHEET 1 OF 1

REV.	DATE	DESCRIPTION
1		



DIGITAL EQUIPMENT CORPORATION MAYNARD, MASSACHUSETTS <b>PARTS LIST</b>				QUANTITY/VARIATION																				
MADE BY KEN GULICK		CHECKED D. HEALY		SECTION		7006320-1	7006320-2																	
DATE 6/5/69		DATE 7/23/69		1																				
ENG <i>W. Wallcut</i>		PROD <i>C.R. Thompson</i>		ISSUED SECT.																				
DATE 8-26-69		DATE 8-26-69		1																				
ITEM NO.	DWG NO. / PART NO.	DESCRIPTION																						
1	E-MD-7407395-0-0	PANEL MTG (TU56)		1	1																			
2	D-IA-7410968-0-0	PANEL OVERLAY		1	1																			
3		ADHESIVE SCOTCH GRIP SPRAY #77		A	RA	R																		
4	<del>C-IA-7407390-0-0</del>	NUB ASSY (6 PT CONTACT)		2	4																			
5	9006341	SCR SOC HD CAP 10 24 X 1/2 BLK PASS.		8	16																			
6	C-MD-7407282-2-0	COVER PLATE (L.H.)		1	2																			
7	C-IA-7407283-2-0	TAPE GUIDE (L.H.)		1	2																			
8	1209602	MOTOR, TORQUE		2	4																			
9	D-IA-7006222-0-0	SWITCH CONTROL PANEL ASS'Y		1	2																			
10	C-IA-7407283-1-0	TAPE GUIDE (R.H.)		1	2																			
11	C-MD-7407282-1-0	COVER PLATE (R.H.)		1	2																			
12	1209691	HEAD ASSY		1	2																			
13	C-MD-7405136-0-0	REAR CHECK TAPE GUIDE		2	4																			
14	B-MD-7405114-1-0	WEAR PLATE (R.H.)		1	2																			
15	9007104	SPR #649-119N INST SPEC. CO.		2	4																			
16	9006345	SCR SOC HD CAP #10-32 X 3/8 SST		2	4																			
17	<del>9008132</del>	<del>DOWEL PIN 3/32 DIA X 7/16 LG</del>		<del>4</del>	<del>8</del>																			
18	9008131	DOWEL PIN 1/8 DIA X 7/8 LG		4	8																			
19	B-MD-7405114-2-0	WEAR PLATE (L.H.)		1	2																			
20	9008130	DOWEL PIN 1/4 DIA X 1 1/4		2	2																			
21	90-07785	GRIP, EXT SER #5555-37 WALDES 3/8" SHAFT		2	2																			
22	B-MD-7407400-0-0	PIN, LOCK		2	2																			
TITLE PANEL FRONT, ASSEMBLY				ASSY NO. E-AD-7006320-0-0		SIZE CODE <b>A PL</b>		NUMBER 7006320-0-0				REV. L		ECO NO. TU56-00064										
SHEET 1 OF 2				DIST. C																				

DIGITAL EQUIPMENT CORPORATION MAYNARD, MASSACHUSETTS <b>PARTS LIST</b>				QUANTITY/VARIATION																			
MADE BY KEN GULICK		CHECKED D. HEALY		SECTION		7006320-1	7006320-2																
DATE 6/5/69		DATE 7/25/69		1																			
ENG <i>W. Wallcut</i>		PROD <i>C.R. Thompson</i>		ISSUED SECT.																			
DATE 8-26-69		DATE 8-26-69		1																			
ITEM NO.	DWG NO. / PART NO.	DESCRIPTION																					
23	9006331	SCR SOC HD CAP 6-32 X 5/8 LG BLK PASS.		4	8																		
24	<del>C-MD-7405136-1-0</del>	<del>REAR CHECK TAPE GUIDE L.H.</del>		<del>2</del>	<del>2</del>																		
25	9006632	WASH INT TOOTH #4		2	4																		
26	9007032	TIE WRAP #SST-2-B PANDUIT		A	RA	R																	
27	9007651	WASH EXT TOOTH #10 HOLE		10	20																		
28	9006022-1	SCR, PH HD PAN #6-32 X 3/8 SST		4	8																		
29	9006014-1	SCR PH HD PAN #4-40 X 5/8 LG SST		2	4																		
30	<del>9008136</del>	<del>GRIP RING EXT SERIES G 5555-9S</del>		<del>4</del>	<del>8</del>																		
31	<del>9006311</del>	<del>HEX SOC SET SCR #10-32 X 1/4 SST</del>		<del>4</del>	<del>8</del>																		
32	90-07772-9	CLAMP, CABLE BASE		1	2																		
33	90-07772-10	CLAMP, CABLE TOP		1	2																		
34	90-06037-2	SCREW FLAT HEAD #8-32 x 3/8 Lg SST		1	2																		
35	C-IA-7408008-0-0	FILLER PLATE		1	2																		
36	1209379	PIN, CONNECTOR		8	16																		
37	1209350-09	HOUSING, CONNECTOR		1	2																		
38	C-IA-7408010-0-0	GAUGE, HUB		A	RA	R																	
39	<del>C-MD-1209830</del>	<del>ARM, PANEL SUPPORT</del>		<del>2</del>	<del>2</del>																		
40	1209926	BUSHING, OIL IMPREGNATED BRONZE		4	8																		
41	1209917	SPRING, COMPRESSION		2	4																		
42	C-MD-7408287-0-0	GUARD PLATE		1	2																		
43	90-06024-1	SCR, PH HD PAN #6-32 x 1/2 SST		2	4																		
44	90-06793	SPACER 3/16AF X 3/16LG #6 HOLE AL		2	4																		
TITLE PANEL FRONT ASSEMBLY				ASSY NO. E-AD-7006320-0-0		SIZE CODE <b>A PL</b>		NUMBER 7006320-0-0				REV. L		ECO NO. TU56-00064									
SHEET 2 OF 2				DIST. C																			